

Tatsunokuchi Onsen Tagawa Ryusenkaku

20 Tatsunokuchi-machi, Nomi 923-1245
 TEL: 0761-51-2111 FAX: 0761-51-3107
 URL: <http://www.ryusenkaku.com/>



Asuka



Tanbo-no-yu



■ Number of seats
200 seats (Convention hall "Asuka" in school style)



■ Traffic access
 20 min by free pickup bus from JR Komatsu Station or JR Matto Station
 (Reservation required: two or more people)
 JR Komatsu Station: 2:10pm, 3:10pm, 4:15pm, 5:40pm
 JR Matto Station: 3:15pm, 4:30pm, 5:30pm



■ Hours
 ■ Date to start accepting reservation
 One year before the date of use



■ Accommodation
 • Japanese-style room: 40 (3 rooms with an open-air bath)
 • Japanese/Western-style room: 12 (8 rooms with an open-air bath)
 Total: 52 rooms (326 people)



■ Restaurants/Cafés
 Club "Hana-to-Cho"



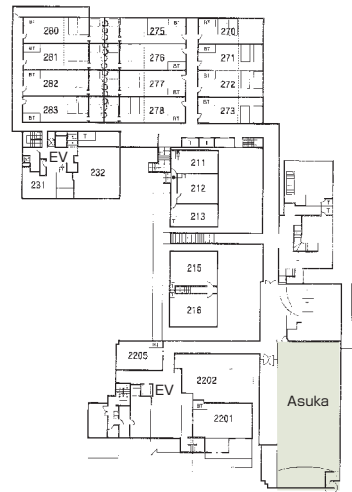
■ Parking
 100 vehicles



■ Remarks
 You can enjoy a variety of hot springs including the largest open-air bath in the Hokuriku region "Tanbo-no-yu". This area is close to the traditional city Kanazawa and has good access to golf courses.

Floor plan

■ 2F



■ Convention site

Site name	Floor	Area(m ²)	Width × Depth (m)	Ceiling height(m)	Capacity (persons)					Remarks
					Fixed seats	School	Theater	Seated	Buffet	
Asuka	2	250	11 × 22.8	2.9		200				The space can be partitioned into two rooms.

Width × Depth and the floor area may not match depending on the shape of the room.