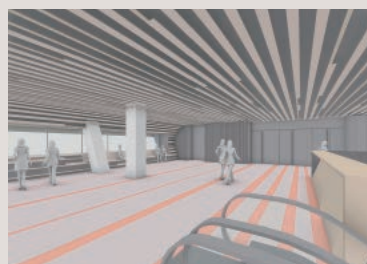


# Komatsu Hokuden Hall (temporary name)

1-100 Hinode-machi, Komatsu 923-0868

TEL: 0761-24-3036



Floor plan



■ Number of seats

**620** seats (Hall 1+2+3+Waiting room in seated style)

**780** seats (Hall 1+2+3 in theater style)



■ Traffic access

1-min walk from JR Komatsu Station

12 min by bus from Komatsu Airport

10-min drive from Komatsu IC of Hokuriku Expressway



■ Hours

9:00am~10:00pm

Open year-round

■ Date to start accepting reservation

Please consult us. (Open period not determined)



■ Accommodation

On 9F and 10F,

GRANBINARIO KOMATSU Annex (temporary name):

66 single rooms



■ Restaurants/Cafés

To be installed in the hall



■ Parking

None

\* Please use pay parking around JR Komatsu Station



■ Remarks

None

■ Convention site

Site name	Floor	Area(m <sup>2</sup> )	Width × Depth (m)	Ceiling height(m)	Capacity (persons)					Remarks
					Fixed seats	School	Theater	Seated	Buffet	
Hall 1	2	220	Approx. 13.0 × 15.0	5.5	—	100	260	190	260	
Hall 2	2	185	Approx. 11.0 × 15.0	5.5	—	80	220	160	220	
Hall 3	2	250	Approx. 15.0 × 15.0	5.5	—	110	300	210	300	
Hall 1+2	2	405	Approx. 24.0 × 15.0	5.5	—	180	480	350	480	
Hall 2+3	2	435	Approx. 26.0 × 15.0	5.5	—	190	520	370	520	
Hall 1+2+3	2	655	Approx. 40.0 × 15.0	5.5	—	290	780	560	780	
Hall 1+2+3+Waiting room	2	730	Approx. 45.0 × 15.0	5.5	—	—	—	620	870	

Width × Depth and the floor area may not match depending on the shape of the room.