

Yamanaka-za

Mu-1 Yakushi-machi, Yamanaka Onsen, Kaga
 922-0123
 TEL: 0761-78-5523 FAX: 0761-78-5524
 URL: <http://www.yamanaka-spa.or.jp/yamanakaza/>



Yamanakaza Hall



■ Number of seats
180 seats



■ Traffic access
 15-min drive from JR Kaga Onsen Station
 30 min by bus from JR Kaga Onsen Station
 40-min drive from Komatsu Airport



■ Hours
 8:30am~10:00pm
 (*The facility cannot be used from 2:30pm to 4:30pm due to regular performance on Sat, Sun and holidays.) Open year-round

■ Date to start accepting reservation
 Six months before the date of use (Temporary reservation is accepted separately.)



■ Accommodation
 None



■ Restaurants/Cafés
 None



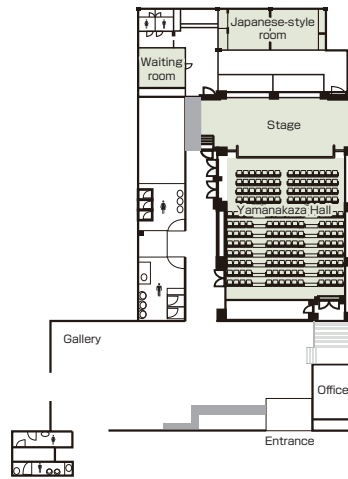
■ Parking
 30 vehicles



■ Remarks
 None

Floor plan

■ 1F



■ Convention site

Site name	Floor	Area(m ²)	Width × Depth (m)	Ceiling height(m)	Capacity (persons)					Remarks
					Fixed seats	School	Theater	Seated	Buffet	
Yamanakaza Hall	1	165			172	90				Fixed seats: 112, Movable seats: 60, Extra seats: 30
Japanese-style room	1	Two 10-tatami-mat rooms								
Waiting room	1	6-tatami-mat								
Lobby	1	117								
Gallery	1	28								
Yamanakaza Square	1	490								

Width × Depth and the floor area may not match depending on the shape of the room.