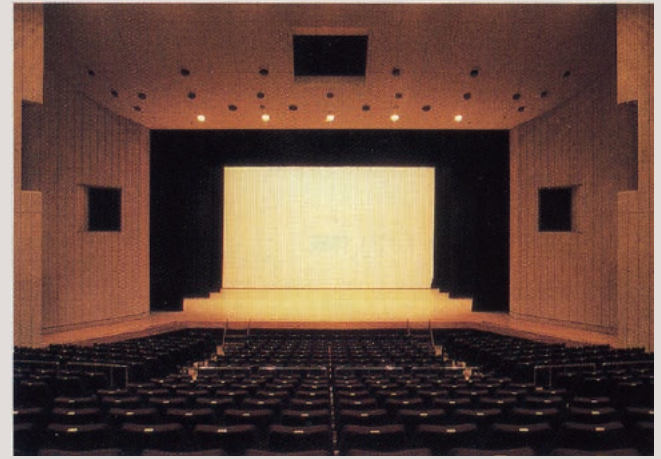


Komatsu Civic Center

Hei-42-3 Oshima-machi, Komatsu 923-0001
 TEL: 0761-24-6101 FAX: 0761-23-5811
 E-mail: siminsenta@city.komatsu.lg.jp



Large hall



■ Number of seats
546 seats (Large hall)
 (Parent and child seats are provided.)



■ Traffic access
 4-min drive from Komatsu IC of Hokuriku Expressway
 8 min by taxi from JR Komatsu Station
 10 min by taxi from Komatsu Airport



■ Hours
 9:00am~10:00pm
 Closed: Monday (the following weekday when Monday is a holiday), year-end and New Year's holidays (Dec. 29~Jan. 3)

■ Date to start accepting reservation
 Large & Small halls: Beginning of the month one year before the date of use
 Other facility : Beginning of the month three months before the date of use



■ Accommodation
 None



■ Restaurants/Cafés
 None

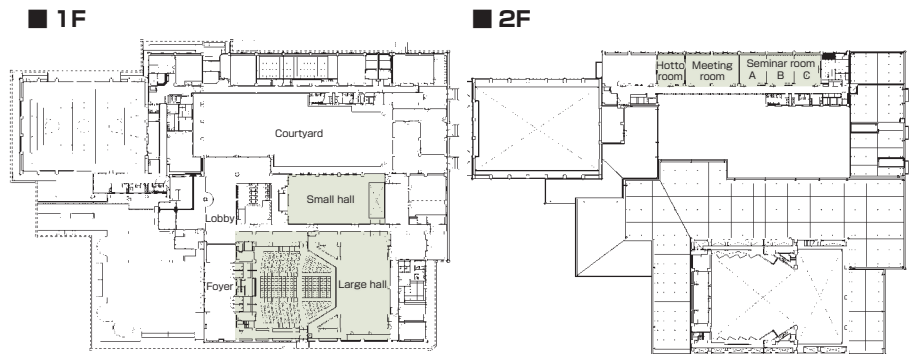


■ Parking
300 vehicles



■ Remarks
 No smoking (incl. parking lot)

Floor plan



■ Convention site

Site name	Floor	Area(m ²)	Width × Depth (m)	Ceiling height(m)	Capacity (persons)					Remarks
					Fixed seats	School	Theater	Seated	Buffet	
Large hall	1	852			546	-	-	-	-	(with parent and child seats)
Small hall	1	350	14.0 × 25.0	6.0	-	240	350	-	-	
Meeting room	2	126	9.0 × 14.0	2.7	-	54	-	-	-	
Seminar room A,B,C	2	189	9.0 × 21.0	2.7	-	126	-	-	-	
Hotto room	2	63	9.0 × 7.0	2.7	-	30	-	-	-	

Width × Depth and the floor area may not match depending on the shape of the room.