

# 1 The Kanazawa Theatre

6-27 Shimohonda-machi, Kanazawa 920-0993  
TEL: 076-220-2501 FAX: 076-222-9000



■ Number of seats  
**1,919** seats (hall)  
There is an orchestra pit.



■ Traffic access  
20-min bus ride from JR Kanazawa Station  
(Get off at Honda-machi and walk for 1 min.)  
15 min by taxi from JR Kanazawa Station



■ Hours  
9:00am~10:00pm  
Closed: 1st and 3rd Wed. and year-end and New Year's holidays (Dec. 29~Jan. 3)

■ Date to start accepting reservation  
Beginning of the month one year before the date of use



■ Accommodation  
None



■ Restaurants/Cafés  
Coffee shop "Honda-no-mori" (40 seats)

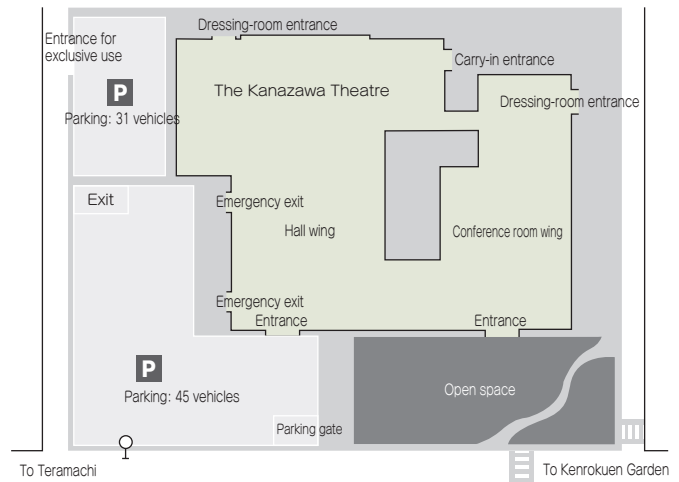


■ Parking Capacity  
**76** vehicles (pay)



■ Remarks  
Eight rooms (1~4, A~D) can be used as dressing rooms.  
The Assembly room Area 1, Large rehearsal room and Conference room 5 are equipped with a screen.

## Floor plan



### ■ Convention site

Site name	Floor	Area (㎡)	Width×Depth (m) (m)	Ceiling height (m)	Capacity (persons)				Remarks	
					Fixed seats	School	Theater	Seated		Buffet
Hall	—	1,403	—	—	1,919	—	—	—	—	1st floor: 1,230 seats, 2nd floor: 689 seats
Assembly room - all areas	2	363	26.1×14.9	3.2	—	270	400	—	—	
Assembly room - Area 1	2	221	15.9×14.9	3.2	—	150	—	—	—	
Assembly room - Area 2	2	100	7.4×14.9	3.2	—	90	—	—	—	
Conference room 1	3	34	7.6× 4.8	3.0	18	—	—	—	—	
Conference room 2	3	33	7.3× 4.7	3.0	18	—	—	—	—	
Conference room 3	3	49	7.1× 7.1	3.0	—	36	—	—	—	} Both rooms can be used together as one room.
Conference room 4	3	54	7.7× 7.1	3.0	—	36	—	—	—	
Conference room 5	2	53	7.0× 7.6	2.6	36	—	—	—	—	} Both rooms can be used together as one room.
Conference room 6	2	51	6.8× 7.6	2.6	36	—	—	—	—	
Conference room 7	2	54	7.2× 7.6	2.6	36	—	—	—	—	
Conference room 8	2	25	7.0× 4.1	2.6	12	—	—	—	—	
Conference room 9	1	124	9.8×12.7	2.8	—	72	—	—	—	
Conference room 10	1	76	9.8× 7.9	2.8	—	45	—	—	—	
Lounge	3	47	7.2× 6.9	2.8	10	—	—	—	—	
Rehearsal room	B1	50	11.5× 4.4	2.4	—	20	—	—	—	
Large rehearsal room	3	177	21.1× 8.7	3.1	—	90	—	—	—	

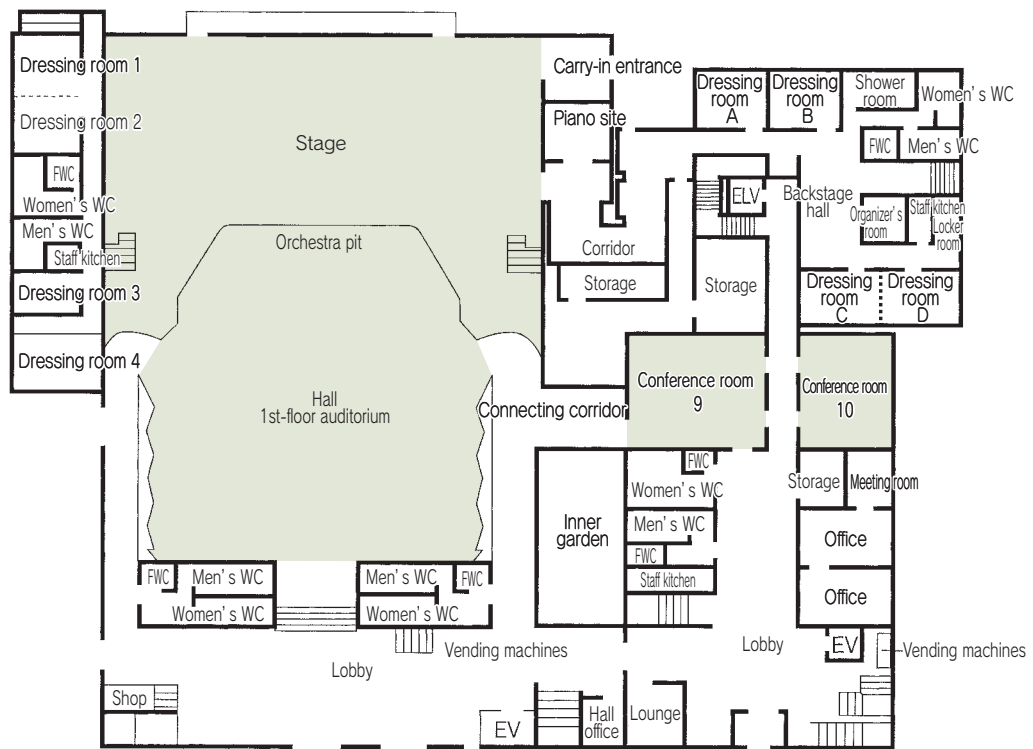
Width × Depth and the floor area may differ depending on the shape of the room.

# Floor plan

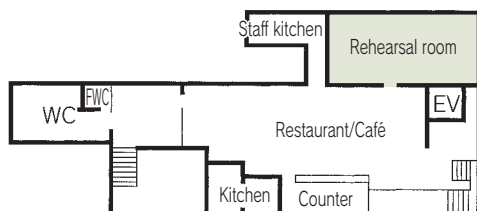


Hall

## 1F

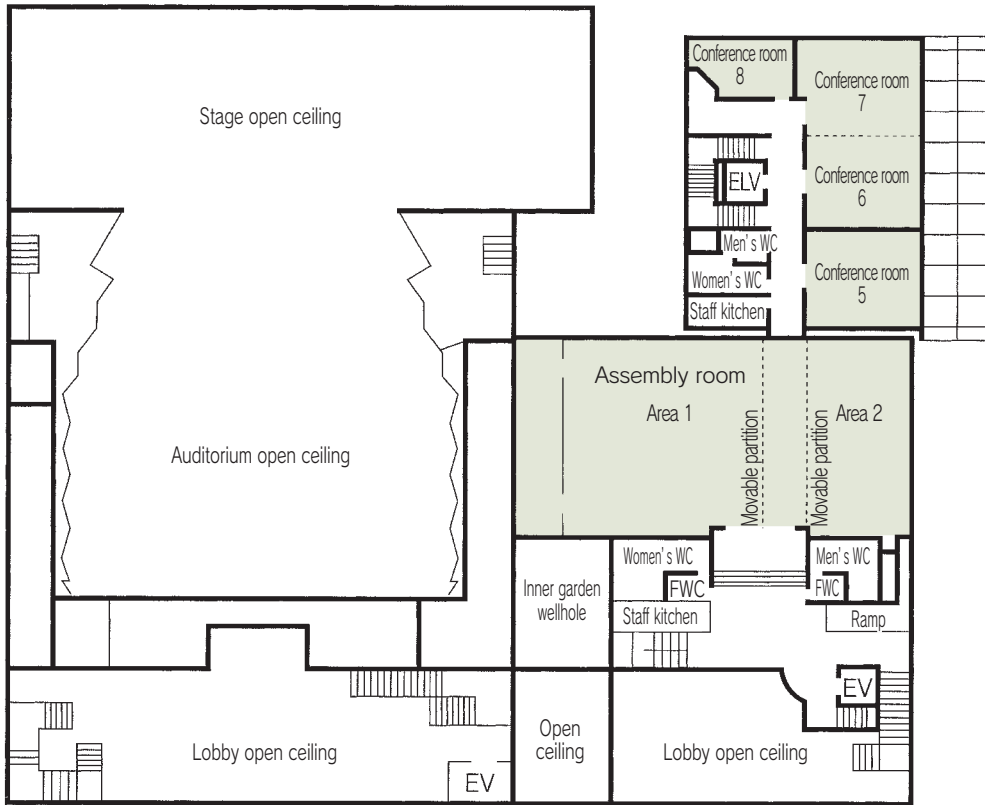


## B1F



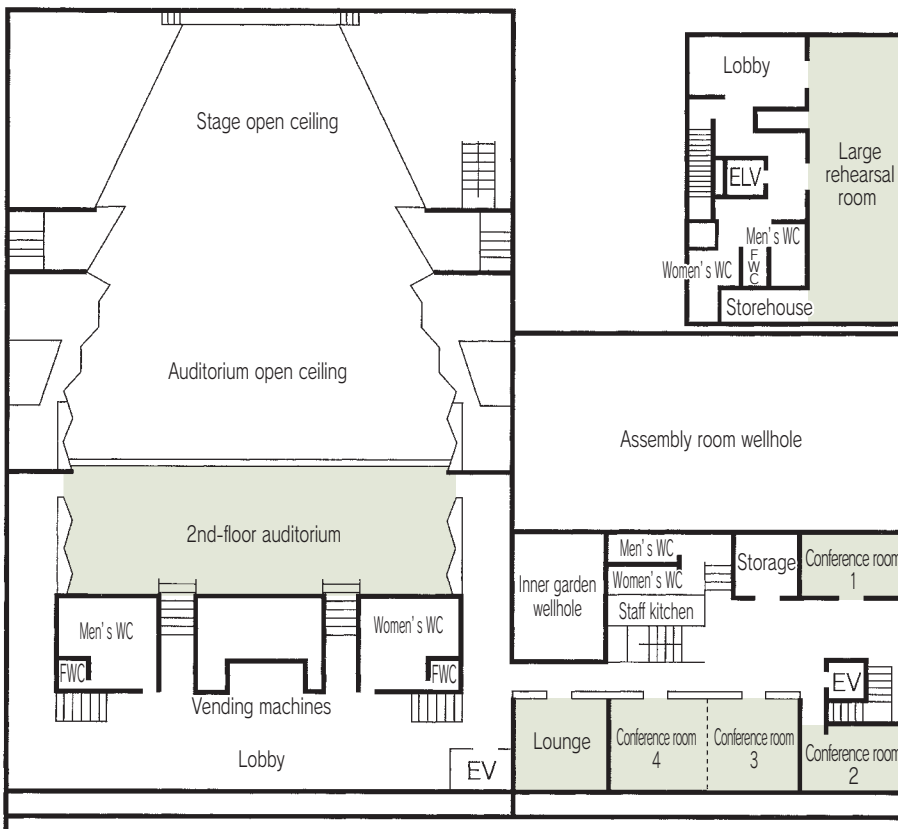
# Floor plan

## 2F



Assembly room

## 3F



Conference room 3 4