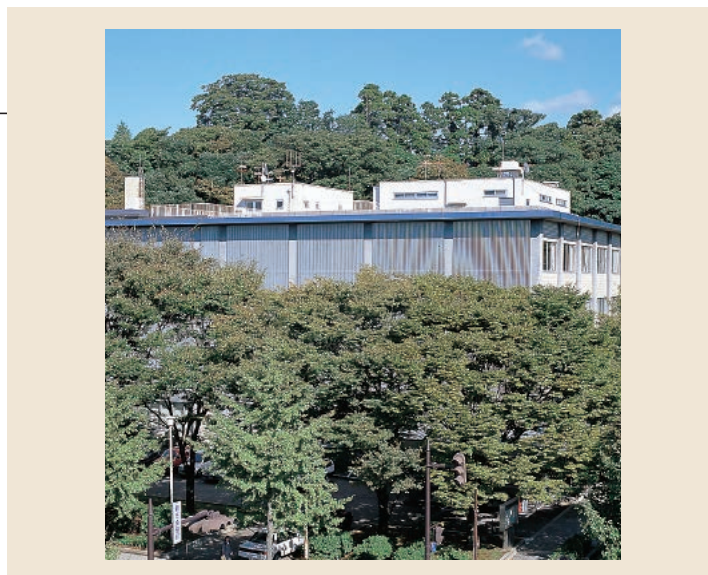


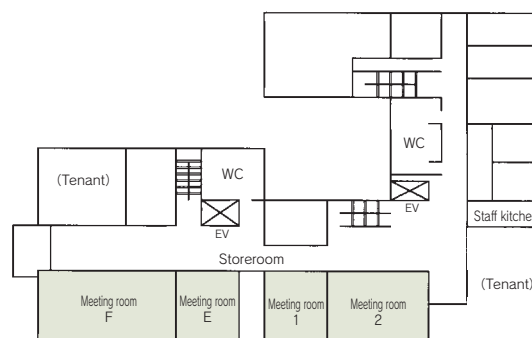
# 3 Ishikawa Prefecture Social Welfare Hall

3-1-10 Honda-machi, Kanazawa 920-8557  
 TEL: 076-223-9552 FAX: 076-223-9563

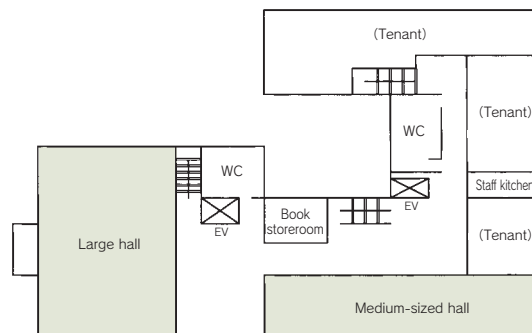


## Floor plan

### ■ 3F



### ■ 4F



■ Number of seats  
**208** seats (Large Hall)



■ Traffic access  
 20-min bus ride from JR Kanazawa Station  
 (Get off at Honda-machi and walk for 2 min.)  
 15 min by taxi from JR Kanazawa Station



■ Hours  
 9:00am~5:00pm  
 Closed: National holidays, year-end and New Year's holidays (Dec. 29~Jan. 3)

■ Date to start accepting reservation  
 One month before the date of use  
 Limited to public events with the purpose of promoting social welfare



■ Accommodation  
 None



■ Restaurants/Cafés  
 None



■ Parking Capacity  
 None



■ Remarks  
 None

### ■ Convention site

Site name	Floor	Area (㎡)	Width×Depth (m) (m)	Ceiling height (m)	Capacity (persons)					Remarks
					Fixed seats	School	Theater	Seated	Buffet	
Large hall	4	376	(16.5×22.8)	4.2	—	—	208	—	—	
Medium-sized hall	4	230	(10.5×21.9)	4.0	—	78	—	—	—	Managed by Ishikawa Prefecture Social Welfare Council
Meeting room E	3	52	—	2.5	—	20	—	—	—	
Meeting room F	3	161	—	2.5	—	44	—	—	—	
Meeting room 1	3	99	—	2.5	20	—	—	—	—	Managed by Ishikawa Prefecture Social Welfare Council
Meeting room 2	3	60	—	2.5	—	40	—	—	—	Managed by Ishikawa Prefecture Social Welfare Council

Width × Depth and the floor area may differ depending on the shape of the room.