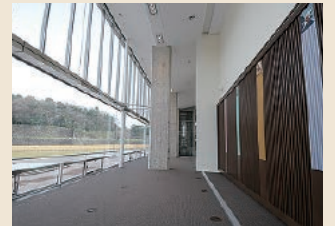


2 Shiinoki Cultural Complex, Ishikawa Prefecture

2-1-1 Hirosaka, Kanazawa 920-0962
 TEL: 076-261-1111 FAX: 076-261-1115
 URL: <https://www.shiinoki-geihinkan.jp/>
 E-mail: info@shiinoki-geihinkan.jp



Garden Room



Event Hall



Seminar Room A



Seminar Room B



■ Number of seats
90 seats (Garden Room)



■ Traffic access
 10-min bus ride from JR Kanazawa Station
 (Get off at Korinbo ATRIO-mae and walk for 5 min.)
 10 min by taxi from JR Kanazawa Station



■ Hours
 9:00am~10:00pm
 (Differs depending on the restaurant or shop)
 Closed: Year-end and New Year's holidays
 (Dec. 29~Jan. 3)

■ Date to start accepting reservation
 Six months before the date of use



■ Accommodation
 None



■ Restaurants/Cafés
 Café & Brasserie "Paul Bocuse" (42 seats)
 Restaurant "Jardin Paul Bocuse" (100 seats)



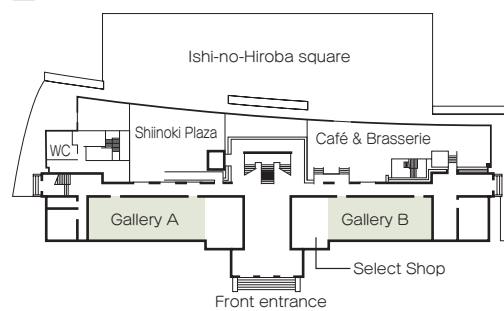
■ Parking Capacity
95 vehicles (pay)



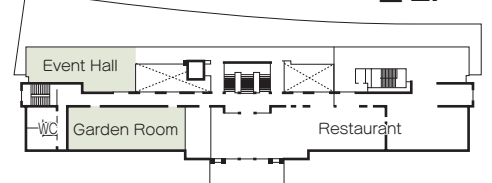
■ Remarks
 None

Floor plan

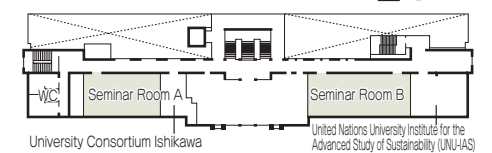
■ 1F



■ 2F



■ 3F



University Consortium Ishikawa

United Nations University Institute for the
 Advanced Study of Sustainability (UNU-IAS)

■ Convention site

Site name	Floor	Area (㎡)	Width×Depth (m) (m)	Ceiling height (m)	Capacity (persons)					Remarks
					Fixed seats	School	Theater	Seated	Buffet	
Garden Room	2	130	7.2×18.2	2.8	—	90	—	—	—	The space can be partitioned into two rooms.
Seminar Room A	3	100	7.2×13.6	3.5	—	40	—	—	—	The space can be partitioned into two rooms.
Seminar Room B	3	130	7.2×18.2	3.5	—	70	—	—	—	The space can be partitioned into two rooms.
Event Hall	2	140	—	7	—	—	—	—	—	
Gallery A	1	130	7.2×18.2	2.8	—	—	—	—	—	
Gallery B	1	100	7.2×13.6	2.8	—	—	—	—	—	

Width × Depth and the floor area may differ depending on the shape of the room.