

3 Kinjohro

2-23 Hashiba-cho, Kanazawa 920-0911
 TEL: 076-221-8188 FAX: 076-221-9146
 URL: <http://www.kinjohro.co.jp>
 E-mai: info@kinjohro.co.jp



■ Number of seats
140seats (Heisei in theater style)



■ Traffic access
 15 min by bus from JR Kanazawa Station
 (Get off at Hashiba-cho)



■ Hours
 9:00 am ~ 10:00 pm

■ Date to start accepting reservation
 At any time



■ Accommodation
 Japanese-style rooms: 6 (3 rooms with beds)
 Total: 22 people



■ Restaurants/Cafés
 Kinjohro main building

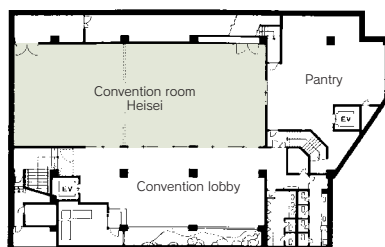


■ Parking Capacity
 A few vehicles (Please use public transportation.)



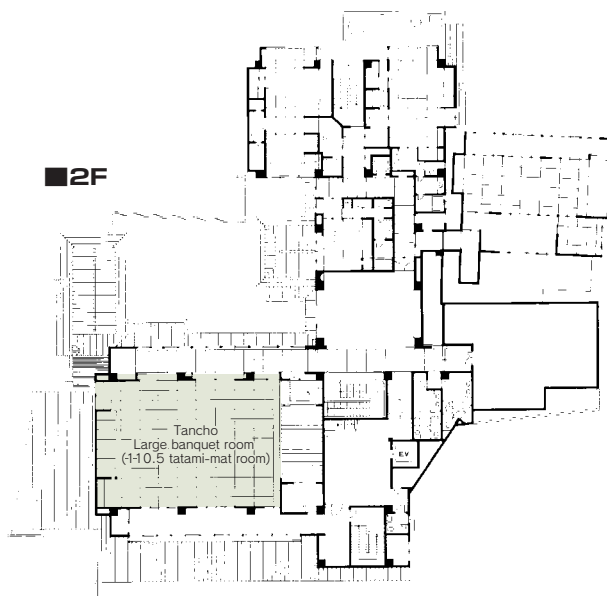
■ Remarks
 If you hold a reception in our facility after the meeting, the meeting room charge will be discounted.
 An acoustic system, podium, MC lectern, and a whiteboard can be used for free.
 Free Wi-Fi available
 A projector and screen can be rented for a fee.

■ B1F



Floor plan

■ 2F



■ Convention site

Site name	Floor	Area (㎡)	Width×Depth (m)(m)	Ceiling height (m)	Capacity (persons)					Remarks
					Fixed seats	School	Theater	Seated	Buffet	
Heisei	Basement	227	9.75×23.3	—	—	120	140	~120	~180	Banquet hall (Western-style room)
Tancho	2	183	11.83×15.47	—	—	—	100	~100	~150	Japanese-style room: 110.5 tatami-mat room with a platform stage

Width × Depth and the floor area may differ depending on the shape of the room.