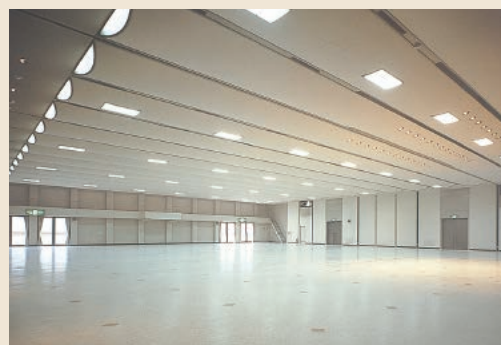


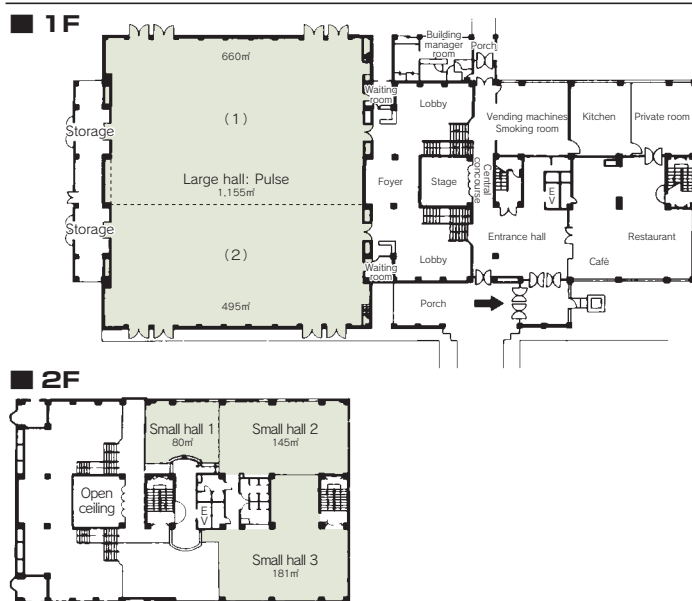
# 5 Kanazawa Ryutsu Kaikan

2-61 Toiya-machi, Kanazawa 920-0061  
 TEL: 076-237-8585 FAX: 076-237-5240  
 URL: <https://www.kimassi.or.jp/>



Large hall: Pulse

## Floor plan



■ Number of seats  
**1,000** seats (Large hall "Pulse")



■ Traffic access  
 15-min bus ride from JR Kanazawa Station  
 (Get off at Toiya Center and walk for 1 min.)  
 10 min by taxi from JR Kanazawa Station



■ Hours  
 9:00am ~6:00pm  
 Closed: Year-end and New Year's holidays  
 (Dec. 29~Jan. 3)

■ Date to start accepting reservation  
 One year before the date of use



■ Accommodation  
 None



■ Restaurants/Cafés  
 Café & Restaurant: 112 seats



■ Parking Capacity  
**270** vehicles (free)



■ Remarks  
 Wired/Wireless LAN accessible

### ■ Convention site

Site name	Floor	Area (m <sup>2</sup> )	Width×Depth (m) (m)	Ceiling height (m)	Capacity (persons)					Remarks
					Fixed seats	School	Theater	Seated	Buffet	
Large hall (entire room)	1	1,155	35.0×30.0	5.0	—	600	1,000	—	—	
Large hall 1	1	660	20.0×30.0	5.0	—	330	500	—	—	
Large hall 2	1	495	15.0×30.0	5.0	—	250	350	—	—	
Small halls (entire space)	2	406	—	—	—	—	—	—	—	
Small hall 1	2	80	6.5× 8.9	3.5	—	—	—	—	—	
Small hall 2	2	145	8.2×15.3	2.7	—	80	100	—	—	
Small hall 3	2	181	14.7×15.3	2.7	—	80	100	—	—	
Workshop room (entire room)	4	198	8.6×20.7	2.7	—	126	—	—	—	
Workshop room 1	4	113	8.6×11.5	2.7	—	72	—	—	—	
Workshop room 2	4	84	8.6× 9.0	2.7	—	54	—	—	—	
Japanese-style room	4	72	5.3× 7.9	2.7	—	—	—	—	—	
Lounge	4	75	6.5× 8.7	2.7	—	28	—	—	—	
Small meeting room	4	33	6.4× 5.2	2.7	—	—	—	—	16	

Width × Depth and the floor area may differ depending on the shape of the room.