

4 Kanazawa Port Cruise Terminal

Ri-65 Muryoji-machi, Kanazawa 920-0332
 TEL: 076-225-7030 FAX: 076-225-7082
 URL: <https://www.kanazawa-cruise.jp/>
 E-mail: office@kanazawa-cruise.jp

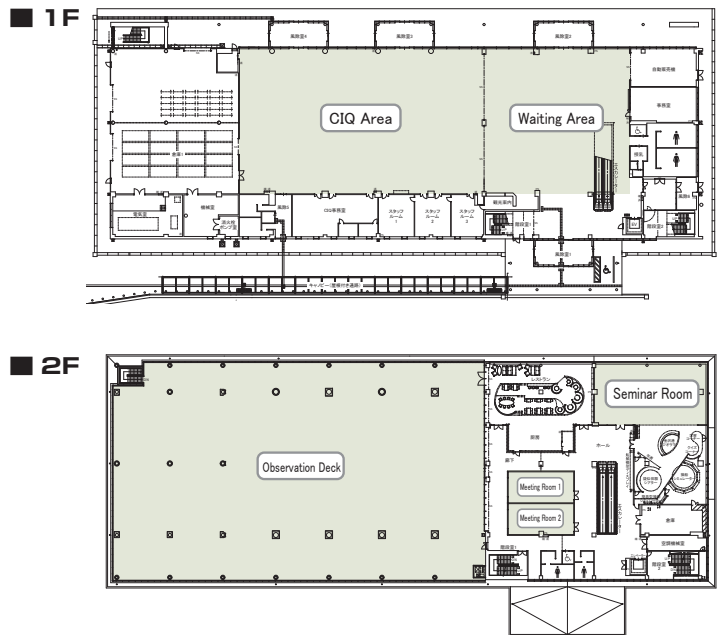


Seminar Room



CIQ Area

Floor plan



■ Number of seats
Approx. 600 seats (CIQ Area)



■ Traffic access
 15-min drive from JR Kanazawa Station or
 Take the Hokutetsu bus and get off at Kanazawako
 Cruise Terminal



■ Hours
 9:00am ~ 9:00pm
 Closed: Dec. 29 ~ Jan. 3

■ Date to start accepting reservation
 Six months before the date of use



■ Accommodation
 None



■ Restaurants/Cafés
 Restaurant "Bay Arce": 65 seats
 10:00am ~ 9:00pm (LO: 8:00pm)
 (Closed on Mon.)
 Tel: 076-214-4464



■ Parking Capacity
610 vehicles (free)
 7:00am ~ 10:00pm



■ Remarks
 Port calls of cruise ships are given priority over
 other reservations (including confirmed bookings)

■ Convention site

Site name	Floor	Area (㎡)	Width × Depth (m)	Ceiling height (m)	Capacity (persons)					Remarks
					Fixed seats	School	Theater	Seated	Buffet	
Meeting Room 1	2	75	6 × 12.5	3	—	42	—	—	—	
Meeting Room 2	2	75	6 × 12.5	3	—	42	—	—	—	
Seminar Room	2	256	11.915 × 21.5	3	—	90	—	—	—	
Observation Deck	2	2,872	40 × 70.4	5 ~ 7.5	—	—	—	—	—	
CIQ Area	1	1,283	27 × 46	4.35 ~ 5	—	—	600	—	—	*Capacity varies depending on chair arrangement.
Waiting Area	1	804	27 × 30	4.2	—	—	—	—	—	
Terminal plaza	1	2,300	21 × 110		—	—	—	—	—	

Width × Depth and the floor area may differ depending on the shape of the room.