

2 Kanazawa New Grand Hotel

4-1 Minami-cho, Kanazawa 920-8688
 TEL: 076-233-1311 FAX: 076-233-1591
 URL: <http://www.new-grand.co.jp>



■ Number of seats
400 seats (Kinsen)



■ Traffic access
 10-min bus ride from JR Kanazawa Station
 (Get off at Minami-cho/Oyama shrine and walk for 2 min.)
 10 min by taxi from JR Kanazawa Station



■ Hours
 7:00am~10:00pm

■ Date to start accepting reservation
 Two years before the date of use.



■ Accommodation
Prestige (Main building)
 • Single room: 35
 • Twin room: 54
 • Double room: 3
 • Other room: 1
 Total: 93rooms (151 people)

Premier (annex)
 • Single room: 55
 • Twin room: 60
 Total: 115rooms (175 people)



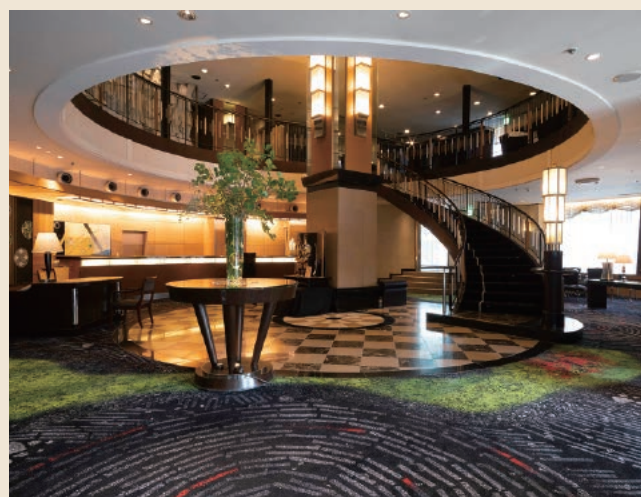
■ Restaurants/Cafés
 • Sky dining "ROI": 70 seats
 • Bar "Dichter": 25 seats
 • Chinese restaurant "Saiko": 60 seats
 • Kaga cuisine "Yuzen": 28 seats
 • Dining "KURA": 52 seats
 • Lounge "ENSHU": 32 seats
 • Kanazawa Tama-zushi: 19 seats



■ Parking Capacity
52 vehicles (pay)



■ Remarks
 None



Lobby



4F Lobby

■ Convention site

Site name	Floor	Area (㎡)	Width×Depth (m) (m)	Ceiling height (m)	Capacity (persons)					Remarks
					Fixed seats	School	Theater	Seated	Buffet	
Kinsen	4	334	23.8×14.0	4.2	—	200	400	200	350	
Kinsen, Lobby	4	512	—	2.4 (Lobby)	—	—	—	—	450	
Kinsen, Lobby, Hagoromo, Takasago, Aioi	4	690	—	2.4 (Lobby)	—	—	—	—	600	
Ginsen	5	256	19.7×13.0	4.1	—	170	300	150	250	
Hagoromo	4	71	7.9× 9.0	2.4	—	30	40	30	30	
Takasago	4	48	5.3× 9.0	2.4	—	20	30	20	20	
Aioi	4	48	5.3× 9.0	2.4	—	20	30	20	20	
Hagoromo/ Takasago	4	125	13.9× 9.0	2.4	—	60	90	60	70	
Takasago/ Aioi	4	101	11.2× 9.0	2.4	—	50	70	50	60	
Hagoromo/ Takasago/ Aioi	4	178	19.8× 9.0	2.4	—	100	150	70	120	
Palazzo	3	230	21.5×10.7	4.0 (Partial)	—	100	180	120	150	
Hakusen (Japanese-style room)	2	83	14.8× 5.6	2.4	—	—	—	50	—	

Width × Depth and the floor area may differ depending on the shape of the room.

Floor plan

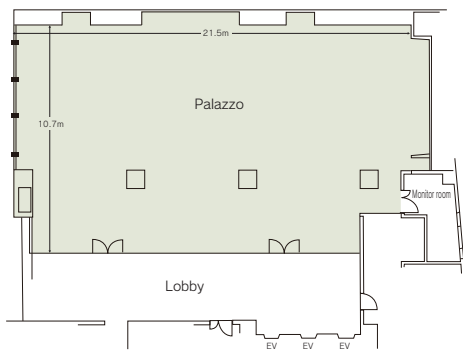


Kinsen

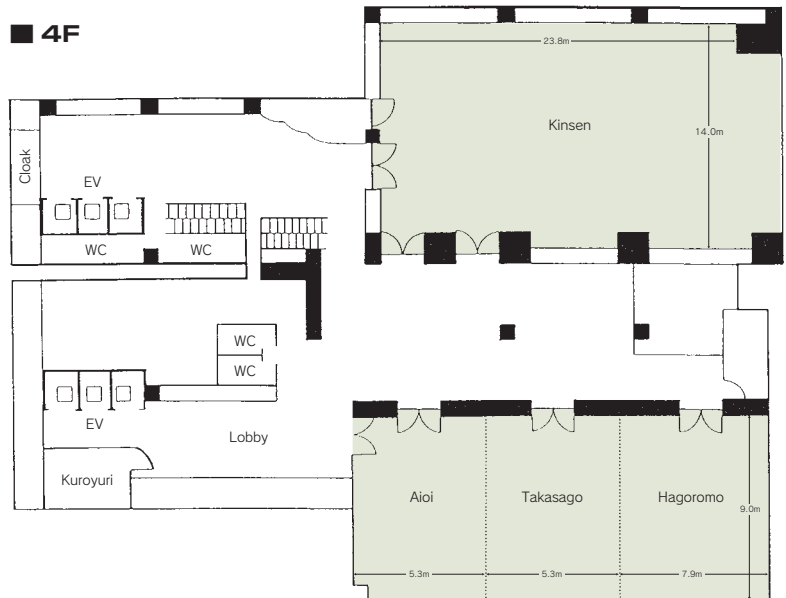


Hagoromo/ Takasago/ Aioi

3F



4F



Ginsen

5F

