

# 14 Ishikawa Prefectural Center for Women

1-44 Sanja-machi, Kanazawa 920-0861  
 TEL: 076-263-0115 FAX: 076-263-0118  
 URL: <https://www.pref.ishikawa.lg.jp/jyoseicenter/>



Hall



■ Number of seats  
**350** seats (Hall)



■ Traffic access  
 10-min walk from JR Kanazawa Station, Kenrokuen Exit (East exit)



■ Hours  
 9:00am~9:00pm  
 Closed: Year-end and New Year's holidays (Dec. 29~Jan. 3)

■ Date to start accepting reservation  
 Six months before the date of use  
 (Hall: one year before)



■ Accommodation  
 None



■ Restaurants/Cafés  
 Café "Hanakanmuri": 26 seats



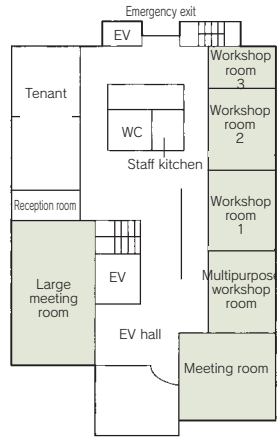
■ Parking Capacity  
 100 vehicles (free)



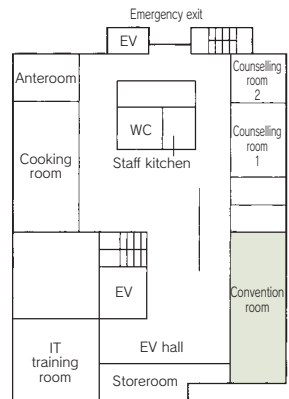
■ Remarks  
 None

## Floor plan

### ■ 2F



### ■ 4F



### ■ Convention site

Site name	Floor	Area (㎡)	Width×Depth (m) (m)	Ceiling height (m)	Capacity (persons)					Remarks
					Fixed seats	School	Theater	Seated	Buffet	
Hall	—	581	—	—	350	—	—	—	—	Seat with a small table
Meeting room	2	77	7.3× 8.1	—	20	—	—	—	—	
Large meeting room	2	158	9.3×16.1	2.6	—	100	—	—	—	
Convention room	4	121	7.6×13.9	2.4	—	50	—	—	—	
Workshop room 1	2	59	6.9× 7.8	2.3	—	30	—	—	—	
Workshop room 2	2	55	6.9× 7.8	2.3	—	30	—	—	—	
Workshop room 3	2	32	6.9× 4.2	2.3	—	16	—	—	—	
Multipurpose workshop room	2	57	6.9× 7.8	2.3	—	30	—	—	—	

Width × Depth and the floor area may differ depending on the shape of the room.