

# 5 Hotel Nikko Kanazawa

2-15-1 Hon-machi, Kanazawa 920-0853  
 TEL: 076-234-1111 FAX: 076-234-8802  
 URL: www.hnkanazawa.jp



Lobby



Large banquet hall "Tsuru-no-ma"



■ Number of seats  
**1,300** seats (Tsuru-no-ma)



■ Traffic access  
 3-min walk from JR Kanazawa Station, Kenrokuen Exit (East exit)



■ Hours  
 9:00am~10:00pm

■ Date to start accepting reservation  
 One year before the date of use



■ Accommodation

• Double room:	90
• Twin room:	128
• Double room (Queen):	12
• Other room:	21
<b>Total:</b>	<b>251 rooms (505 people)</b>



■ Restaurants/Cafés

- European cuisine "La Plage": 42 seats
- Sky lounge "Le Grand Chariot": 38 seats
- Chinese cuisine "Toh-Lee": 100 seats
- Main bar "Vol de Nuit": 29 seats
- Grilled-dish restaurant "Icho": 19 seats
- Japanese restaurant "Benkay": 132 seats
- Buffet restaurant "The Garden House": 136 seats
- Lobby lounge "Fountain": 48 seats



■ Parking Capacity  
**378** vehicles (pay)



■ Remarks  
 None

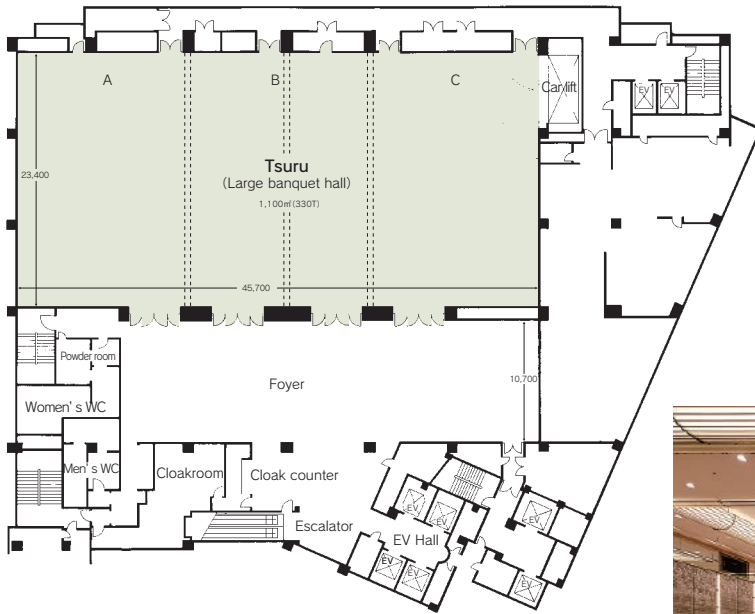
## ■ Convention site

Site name	Floor	Area (㎡)	Width×Depth (m) (m)	Ceiling height (m)	Capacity (persons)					Remarks
					Fixed seats	School	Theater	Seated	Buffet	
Tsuru (entire room)	4	1,100	45.7×23.4	7.0	—	700	1,300	600	1,100	Car lift
Tsuru (A)	4	350	15.0×23.4	7.0	—	200	340	130	350	
Tsuru (B)	4	400	17.0×23.4	7.0	—	230	360	160	400	
Tsuru (C)	4	350	15.0×23.4	7.0	—	200	340	130	350	
Kujaku (entire room)	3	610	29.8×20.4	4.0	—	380	750	380	500	Car lift
Kujaku (A)	3	220	10.8×20.4	4.0	—	100	200	80	180	
Kujaku (B)	3	140	7.0×20.4	4.0	—	60	100	50	120	
Kujaku (C)	3	250	12.0×20.4	4.0	—	130	260	130	200	
Function room "La Grande Lumiere"	3	158	9.2×17.2	4.2	—	—	80	50	—	
Matsu	5	41	—	—	—	—	—	15	—	
Take	5	41	—	—	—	—	—	15	—	
Ume	5	33	—	—	—	—	—	12	—	
Tachibana	5	33	—	—	—	—	—	12	—	
Orchid room	5	70	—	—	—	—	—	30	35	

Width × Depth and the floor area may differ depending on the shape of the room.

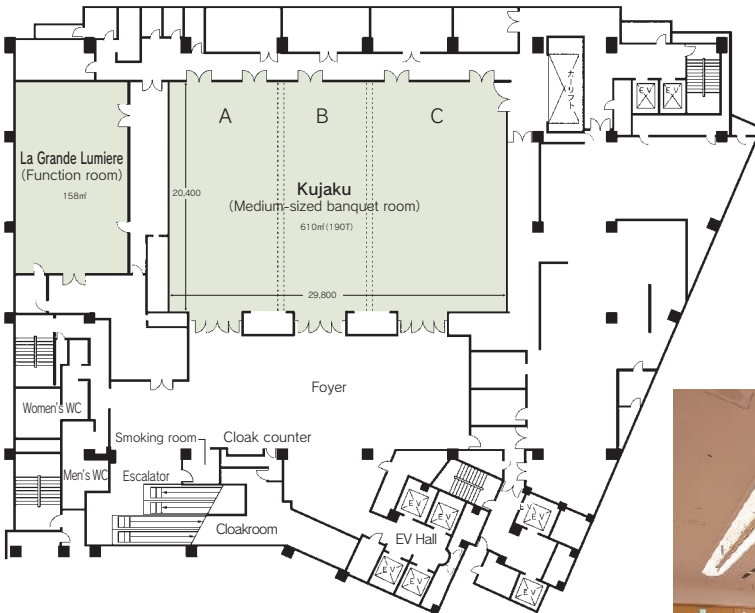
# Floor plan

## 4F Tsuru



Tsuru

## 3F Kujaku



Kujaku