

6 Hondanomori Hokuden Hall

4-17-1 Ishibiki, Kanazawa 920-0935
 TEL: 076-222-0011 FAX: 076-222-1358
 URL: <http://www.hondanomori-hall.com>



Hall



■ Number of seats
1,707 seats (3 wheelchair spaces)



■ Traffic access
 20-min bus ride from JR Kanazawa Station
 (Get off at Dewa-machi and walk for 3 min.)
 15 min by taxi from JR Kanazawa Station



■ Hours
 9:00am ~ 10:00pm
 Closed: Weekends and holidays
 (unless there is an event)

Floor plan

■ Date to start accepting reservation
 Beginning of the month one year before
 the date of use



■ Accommodation
 None



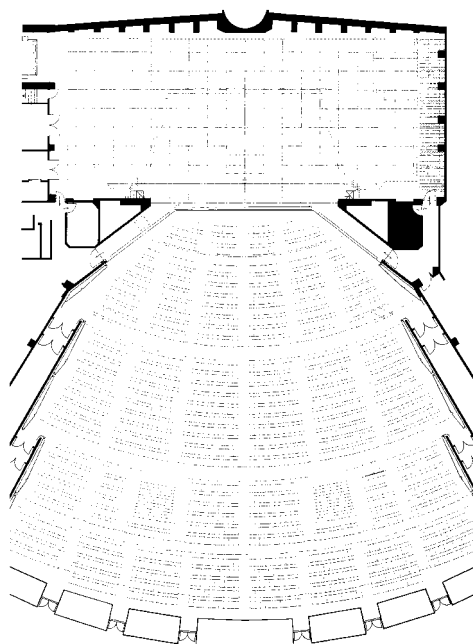
■ Restaurants/Cafés
 Shop, Vending machines



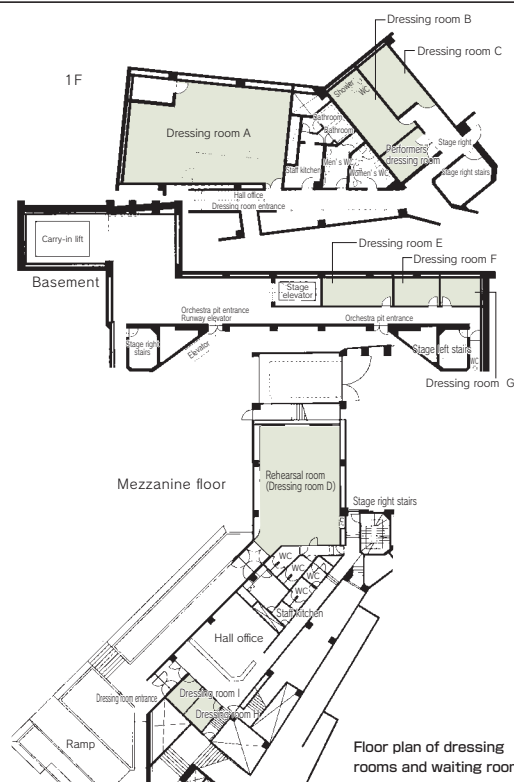
■ Parking Capacity
 Prefectural parking: **370** vehicles
 (pay)



■ Remarks
 25 vehicles for organizers
 (free)



Floor plan of the auditorium



Floor plan of dressing rooms and waiting rooms

■ Convention site

Site name	Floor	Area (㎡)	Width×Depth (m)(m)	Ceiling height (m)	Capacity (persons)				Remarks	
					Fixed seats	School	Theater	Seated		Buffet
Hall	—	1,421	—	—	1,707	—	—	—	—	
Dressing room A	1	96	—	—	—	—	—	—	—	Partitioned into two rooms. With a bathroom
Dressing room B	1	19.5	—	—	—	—	—	—	—	
Dressing room C	1	15	—	—	—	—	—	—	—	
Performers' dressing room	1	9.7	—	—	—	—	—	—	—	
Dressing room E	Basement	19.5	—	—	—	—	—	—	—	
Dressing room F	Basement	12.6	—	—	—	—	—	—	—	
Dressing room G	Basement	11.2	—	—	—	—	—	—	—	
Rehearsal room (Dressing room D)	Mezzanine floor	99	—	—	—	—	—	—	—	
Dressing room H	Mezzanine floor	9.3	—	—	—	—	—	—	—	} Can be used as one room
Dressing room I	Mezzanine floor	8.4	—	—	—	—	—	—	—	

Width × Depth and the floor area may differ depending on the shape of the room.