

11 Hokkoku Shimbun Akabane Hall

2-1 Minami-cho, Kanazawa 920-0919
TEL: 076-260-3555 FAX: 076-260-5063
E-mail: office@akabane-hall.jp



Hall



Hokkoku Shimbun Koryu Hall



Akabane Hall auditorium(Proscenium style)



■Number of seats

504 seats +4 wheelchair spaces
(450 seats+54 balcony seat)



■Traffic access

10-min bus ride from JR Kanazawa Station (East exit)
(Get off at Korinbo and walk for 3 min.)
6 min by taxi from JR Kanazawa Station (East exit)
60-min bus ride from Komatsu Airport
(Get off at Korinbo and walk for 3 min.)



■Hours

9:00am~9:30pm
No regular closing days

■Date to start accepting reservation

Beginning of the month one year before the date of use
For seminar room use only, two months before the date of use



■Accommodation

None



■Restaurants/Cafés

Bar counter (opened by the hall only when requested
by the event organizer)



■Parking Capacity

Underground parking lot (pay)



■Remarks

Located in central Kanazawa (close to Korinbo and Katamachi)
Shoe-box-style for concerts and proscenium-style for plays
and lectures available
We have a rent discount system. There is a path to Hokkoku
Shimbun Kaikan. You can rent spaces in both buildings.

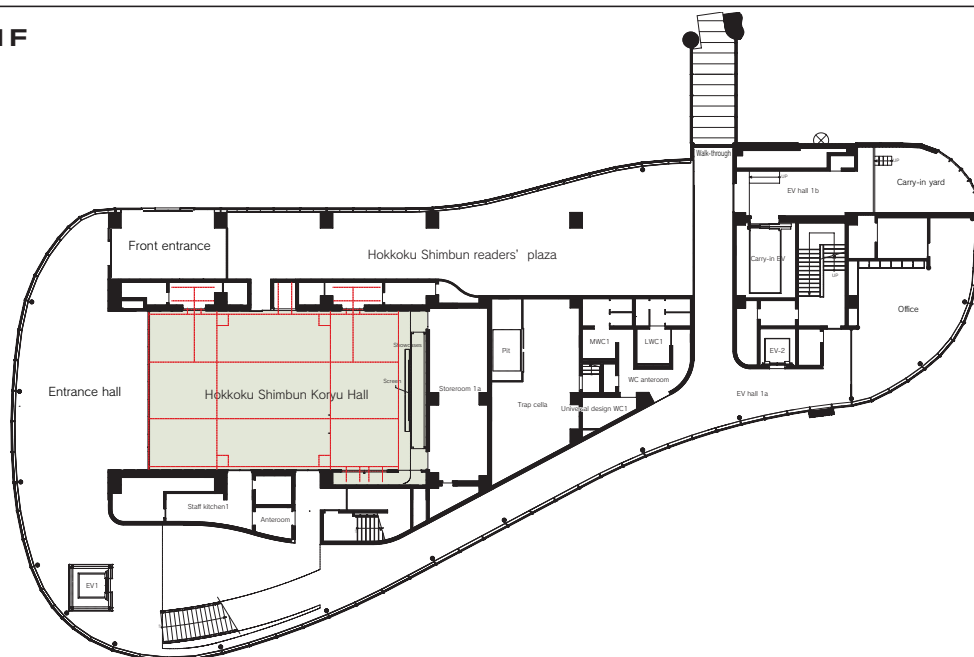
■Convention site

Site name	Floor	Area (㎡)	Width×Depth (m) (m)	Ceiling height (m)	Capacity (persons)					Remarks
					Fixed seats	School	Theater	Seated	Buffet	
Akabane Hall auditorium	2	329.7	21.0×15.7	—	504	—	—	—	—	Balcony seats: 54 4 wheelchair spaces When a runway is installed: Max. 34 seats When a front stage is installed: Max. 71 seats A variety of stage equipment is available. A Steinway piano is provided.
Stage (Shoe box style)			15.7× 8.7	—						
Stage (Proscenium style)			12.2× 8.3	—						
Hokkoku Shimbun Koryu Hall	1	205	10.0×20.5	3.2	—	114	196	—	—	Movable partitions and various stage equipment
Seminar room	3	118	9.5×12.4	2.6~3.6	—	—	—	—	—	

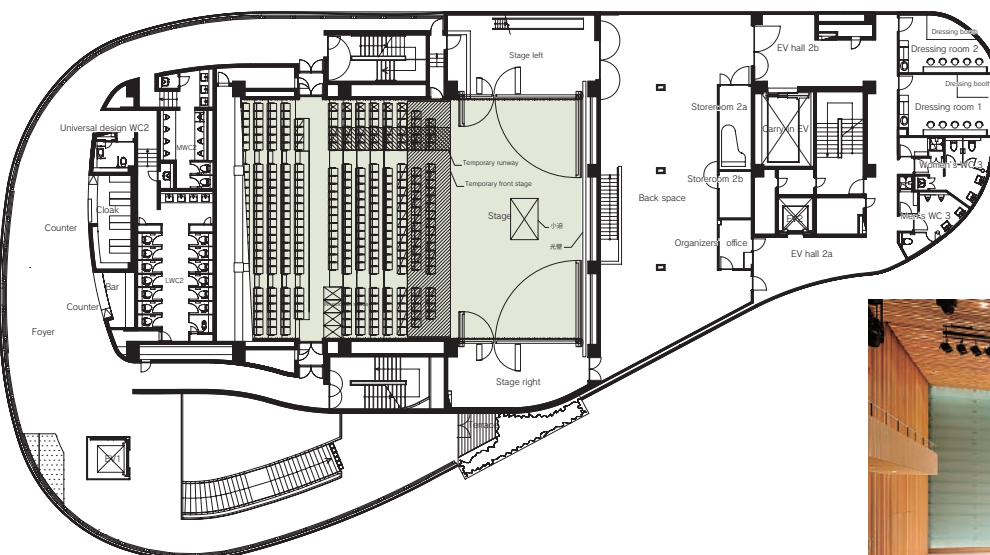
Width × Depth and the floor area may differ depending on the shape of the room.

Floor plan

1F



2F



Akabane Hall (Shoe box style)

3F

