

Lifelong Learning Center Rapia Kashima

Ni-50 Ida, Nakanotomachi, Kashima-gun 929-1721

TEL: 0767-76-1900 FAX: 0767-76-0909

URL: https://www.town.nakanoto.ishikawa.jp/soshiki/shougaigakushuu/3/1_1/3/1378.html

E-mail: shougaku@town.nakanoto.ishikawa.jp



■ Number of seats
500 seats (Iris Hall)



■ Traffic access
Take a community bus from JR Yoshikawa Station, get off at Road Station Orihime-no-sato and walk for 10 min.
10 min. by taxi from JR Yoshikawa Station.



■ Hours
9:00am~ 10:00pm
Closed: Monday and holiday (Iris Hall closes the following day of holidays), Year-end and New Year's holidays (Dec. 28-Jan 4)

■ Date to start accepting reservation
From six months to seven days before the date of use (Hall: by 15 days before the date of use)



■ Accommodation
None



■ Restaurants/Cafés
None



■ Parking
131 vehicles (free)



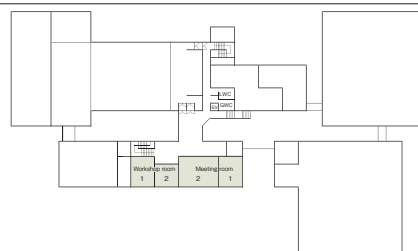
■ Remarks
The town library is attached



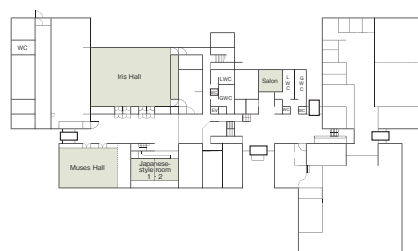
Iris Hall

Floor plan

■ 2F



■ 1F



■ Convention site

Site name	Floor	Area(m ²)	Width × Depth (m)	Ceiling height(m)	Capacity (persons)					Remarks
					Fixed seats	School	Theater	Seated	Buffet	
Iris Hall	1	—	—	—	500	—	—	—	—	
Muses Hall	1	267	—	—	150	—	—	—	—	
Japanese-style room 1	1	61	—	—	—	25	—	—	—	18-tatami-mat
Japanese-style room 2	1	61	—	—	—	25	—	—	—	18-tatami-mat
Lounge	1	35	—	—	16	—	—	—	—	
Workshop room 1	2	55	—	—	—	20	—	—	—	
Workshop room 2	2	55	—	—	—	20	—	—	—	
Meeting room 1	2	55	—	—	20	—	—	—	—	
Meeting room 2	2	110	—	—	32	—	—	—	—	

Width × Depth and the floor area may not match depending on the shape of the room.