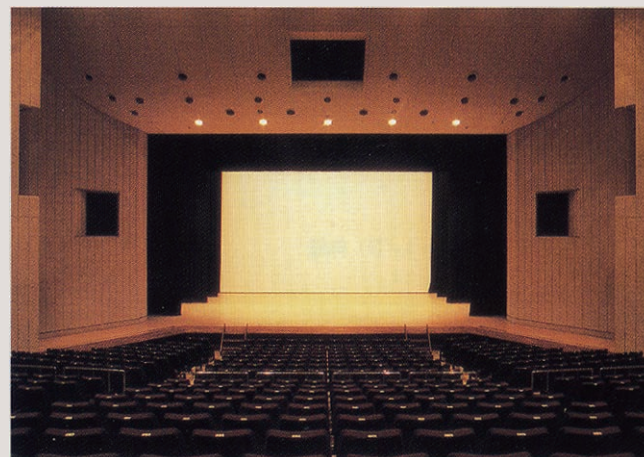
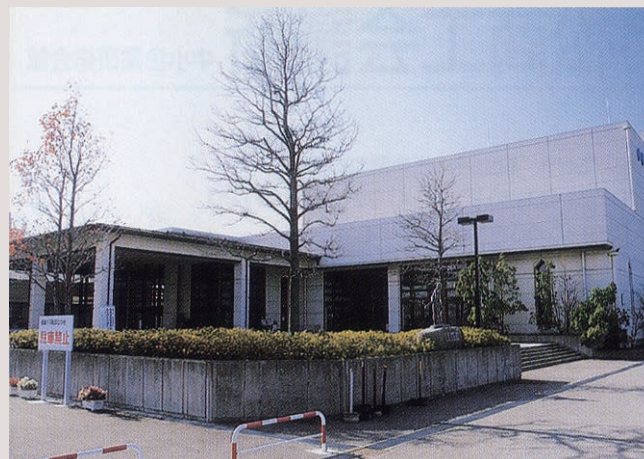


Komatsu Civic Center

Hei-42-3 Oshima-machi, Komatsu 923-0001

TEL: 0761-24-6101 FAX: 0761-23-5811

E-mail: siminsenta@city.komatsu.lg.jp



Large hall

Floor plan



■ Number of seats

546 seats (Large hall)
(Parent and child seats are provided.)



- Traffic access

4-min drive from Komatsu IC of Hokuriku
Expressway
8 min by taxi from JR・IR Komatsu Station
10 min by taxi from Komatsu Airport



■ Hours

9:00am~10:00pm
Closed: Monday (the following weekday when Monday is a holiday), year-end and New Year's holidays (Dec. 29~Jan. 3)

■ Date to start accepting reservation

Large & Small halls: Beginning of the month one year before the date of use

Other facility : Beginning of the month three months before the date of use



■ Accommodation

None



■ Restaurants/Cafés

None



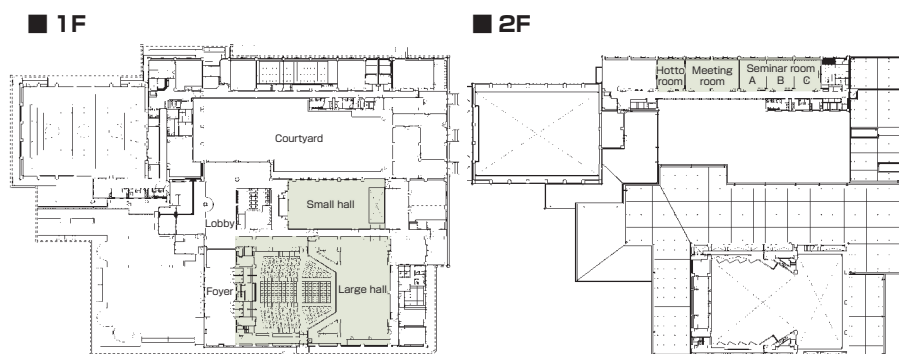
■ Parking

300 vehicles



■ Remarks

No smoking (incl. parking lot)



■ Convention site

[illegible]

Width × Depth and the floor area may not match depending on the shape of the room.