

Tatsunokuchi Onsen Tagawa Ryusenkaku

20 Tatsunokuchi-machi, Nomi 923-1245

Tel: 0761-51-2111

Fax: 0761-51-3107

URL: <http://www.ryusenkaku.com/>



■ Number of seats

200 seats (Convention hall "Asuka" in school style)



■ Traffic access

20 min by free pickup bus from JR Komatsu Station or JR Matto Station

(Reservation required: two or more people)

JR Komatsu Station: 2:10pm, 3:10pm, 4:15pm, 5:40pm

JR Matto Station: 3:15pm, 4:30pm, 5:30pm



■ Hours

■ Date to start accepting reservation

- One year before the date of use



■ Accommodation

• Japanese-style room: 40 (3 rooms with an open-air bath)

• Japanese/Western-style room: 12 (8 rooms with an open-air bath)

Total: 52 rooms (326 people)



■ Restaurants/Cafés

- Club "Hana-to-Cho"



■ Parking

- 100 vehicles



■ Remarks

You can enjoy a variety of hot springs including the largest open-air bath in the Hokuriku region "Tanbo-no-yu". This area is close to the traditional city Kanazawa and has good access to golf courses.



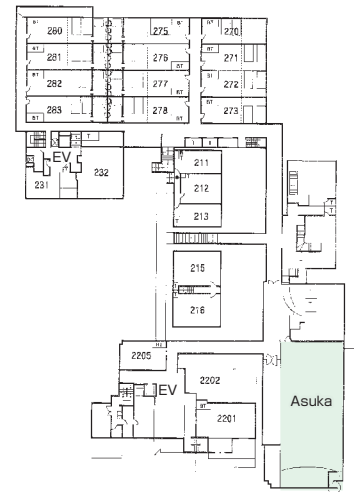
Asuka



Tanbo-no-yu

Floor plan

■ 2F



■ Convention site

| Site name | Floor | Area(m ²) | Width × Depth (m) (m) | Ceiling height(m) | Capacity (persons) | | | | | Remarks |
|-----------|-------|-----------------------|-----------------------|-------------------|--------------------|--------|---------|--------|--------|--|
| | | | | | Fixed seats | School | Theater | Seated | Buffet | |
| Asuka | 2 | 250 | 11 × 22.8 | 2.9 | | 200 | 260 | 120 | | The space can be partitioned into two rooms. |
| | | | | | | | | | | |
| | | | | | | | | | | |
| | | | | | | | | | | |
| | | | | | | | | | | |
| | | | | | | | | | | |
| | | | | | | | | | | |
| | | | | | | | | | | |
| | | | | | | | | | | |

Width × Depth and the floor area may not match depending on the shape of the room.