

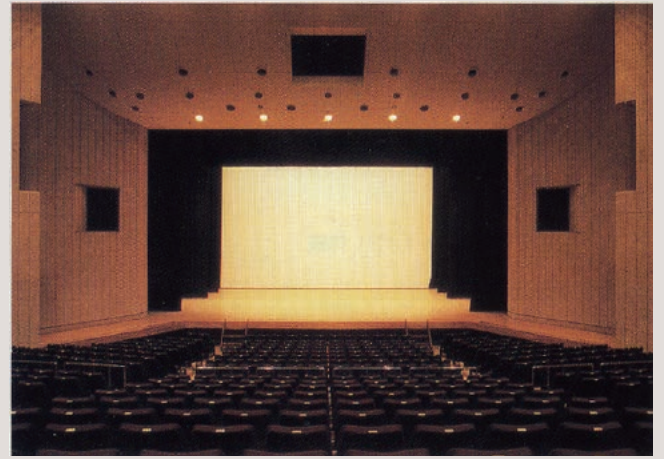
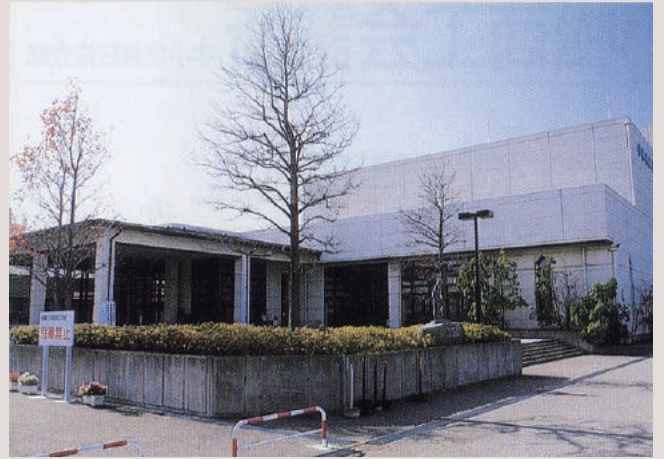
Komatsu Civic Center

Hei-42-3 Oshima-machi, Komatsu 923-0001

Tel: 0761-24-6101

Fax: 0761-23-5811

E-mail: siminsenta@city.komatsu.lg.jp



Large hall



■ Number of seats

546 seats (Large hall)
(Parent and child seats are provided.)



■ Traffic access

4-min drive from Komatsu IC of Hokuriku Expressway
8 min by taxi from JR Komatsu Station
10 min by taxi from JR Komatsu Airport



■ Hours

9:00am~10:00pm
Closed: Monday (the following weekday when Monday is a holiday), year-end and New Year's holidays (Dec. 29~Jan. 3)

■ Date to start accepting reservation

Large & Small halls: Beginning of the month one year before the date of use
Other facility: Beginning of the month 3 months before the date of use



■ Accommodation

None



■ Restaurants/Cafés

• Coffee shop (snack)
"Elsa": 25 seats



■ Parking

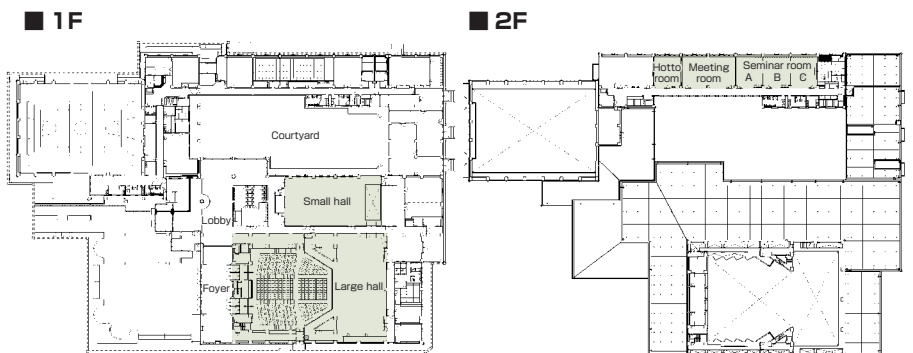
300 vehicles



■ Remarks

No smoking (incl. parking lot)

Floor plan



■ Convention site

Site name	Floor	Area(m ²)	Width × Depth (m)	Ceiling height(m)	Capacity (persons)					Remarks
					Fixed seats	School	Theater	Seated	Buffet	
Large hall	1	852	15.0 × 13.0	7.8	546	-	-	-	-	(with parent and child seats)
Small hall	1	350	14.0 × 25.0	6.0	-	240	350	-	-	
Meeting room	2	126	8.5 × 14.8	2.7	-	54	-	-	-	
Seminar room A,B,C	2	181	8.5 × 21.4	2.7	-	126	-	-	-	
Hotto room	2	63	8.5 × 7.5	2.7	-	30	-	-	-	

Width × Depth and the floor area may not match depending on the shape of the room.