

# 46 Kinjohro

2-23 Hashiba-cho, Kanazawa 920-0911  
 Tel: 076-221-8188 Fax: 076-221-9146  
 URL <http://www.kinjohro.co.jp>  
 E-mai [info@kinjohro.co.jp](mailto:info@kinjohro.co.jp)



■ Number of seats  
**140**seats (Theater-style)



■ Traffic access  
 15 min by bus from JR Kanazawa Station (Get off at Hashiba-cho bus stop)



■ Hours  
 9:00 am~10:00 pm

■ Date to start accepting reservation  
 At any time



■ Accommodation  
 Japanese-style rooms: 6 (3 rooms with beds):  
 Total: 22 people



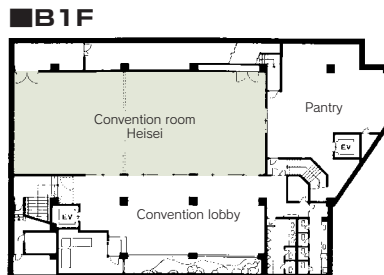
■ Restaurants/Cafés  
 Kinjohro main building



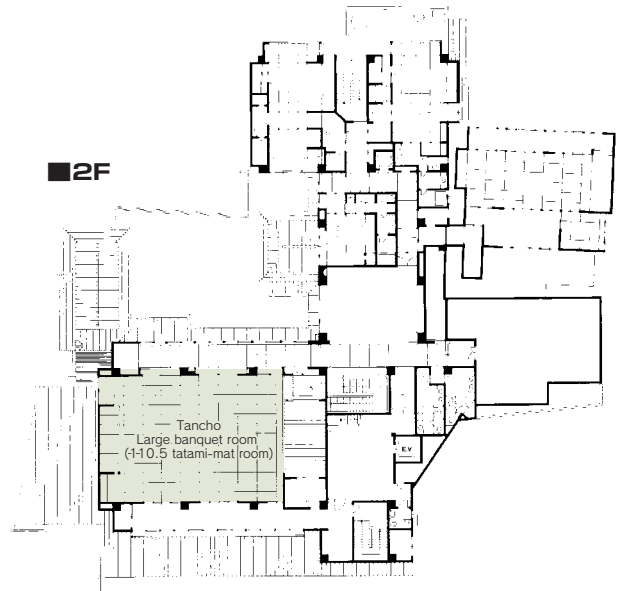
■ Parking  
 A few vehicles (Please use public transportation.)



■ Remarks  
 If you hold a reception in our facility after the meeting, the meeting room charge will be discounted.  
 An acoustic system, podium, MC lectern, and a whiteboard can be used for free.  
 Free Wi-Fi available  
 A projector and screen can be rented for a fee.



## コンベンション会場



### ■ Convention site

Site name	Floor	Area (㎡)	Width×Depth (m)(m)	Ceiling height (m)	Capacity (persons)					Remarks
					Fixed seats	School	Theater	Seated	Buffet	
Heisei	Basement	227	9.75×23.3	—	—	120	140	~120	~180	Banquet hall (Western-style room)
Tancho	2	183	11.83×15.47	—	—	—	100	~100	~150	Japanese-style room: 110.5 tatami-mat room with a platform stage

Width × Depth and the floor area may differ depending on the shape of the room.