

45 Ishikawa Prefecture Workers' Welfare and Culture Center

(Friend Park Ishikawa)

3-3-5 Sainen, Kanazawa 920-0024

Tel: 076-234-2421 Fax: 076-231-1731

URL <http://www.ishikawa-rofukukyo.jp/friendpark/>



■ Number of seats
150 seats (Halls)



■ Traffic access
5-min bus ride from JR Kanazawa Station
(Get off at Ekinishi godochosha-mae and walk for one min.)
5 min by taxi from JR Kanazawa Station



■ Hours
9:00am~8:40pm

■ Date to start accepting reservation
One year before the date of use



■ Accommodation
None



■ Restaurants/Cafés
None



■ Parking
20 vehicles (free)



■ Remarks
Smoking room (2nd-floor)
No need to set up the site and return it to its original state



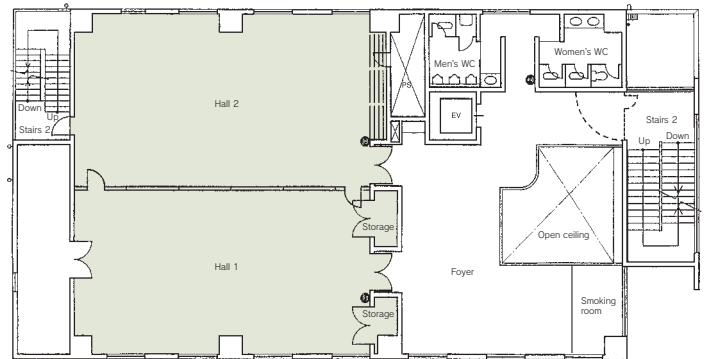
Entire hall



Meeting room 3

Floor plan

■ 2F



■ Convention site

Site name	Floor	Area (㎡)	Width×Depth (m) (m)	Ceiling height (m)	Capacity (persons)					Remarks
					Fixed seats	School	Theater	Seated	Buffet	
Entire hall	2	198	15.0×13.2	3.0	—	144	—	—	—	Chairs:190 Square shaped layout:60
Hall 1	2	96	7.3×13.2	3.0	—	72	—	—	—	Square shaped layout:48
Hall 2	2	102	7.7×13.2	3.0	—	72	—	—	—	Square shaped layout:48
Meeting room 1	3	40	7.0× 5.7	2.5	—	20	—	—	—	Square shaped layout:22
Meeting room 2	4	69	9.5× 7.3	2.5	—	36	—	—	—	Square shaped layout:36
Meeting room 3	5	40	7.0× 5.7	2.5	—	20	—	—	—	Square shaped layout:22
Meeting room 4 (Round table)	7	37	6.5× 5.7	2.5	14	—	—	—	—	

Width × Depth and the floor area may differ depending on the shape of the room.