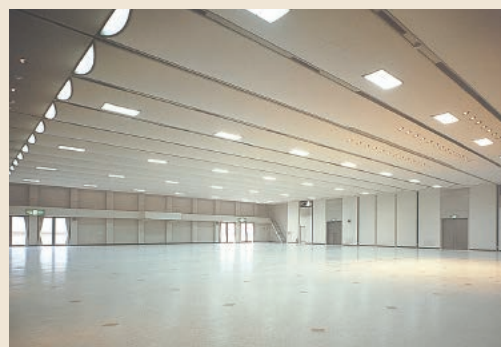


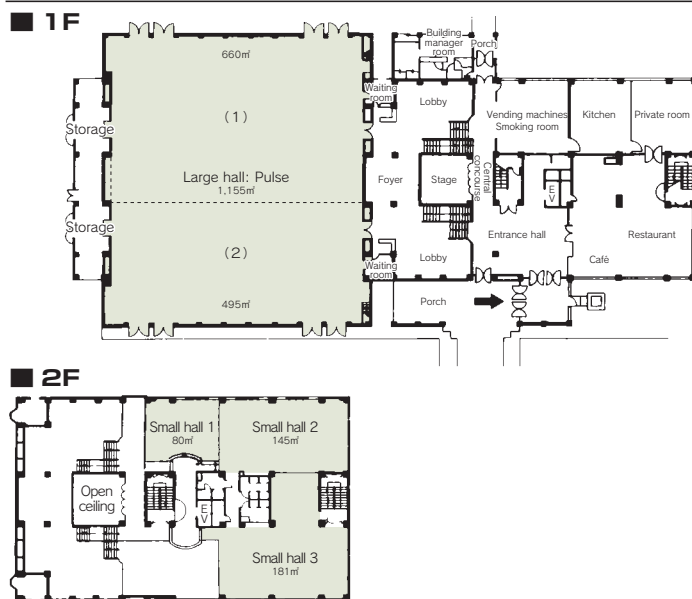
44 Kanazawa Ryutsu Kaikan

2-61 Toiya-machi, Kanazawa 920-0061
 Tel: 076-237-8585 Fax: 076-237-5240
 URL <http://www.kimassi.or.jp/>



Large hall: Pulse

Floor plan



■ Number of seats
1,000 seats (Large hall "Pulse")



■ Traffic access
 15-min bus ride from JR Kanazawa Station
 Kanazawa Port Exit (West exit)
 (Get off at Toiya Center and walk for one min.)
 10 min by taxi from JR Kanazawa Station
 Kanazawa Port Exit (West exit)



■ Hours
 9:00am ~6:00pm
 Closed: Year-end and New Year's holidays
 (Dec. 29~Jan. 3)

■ Date to start accepting reservation
 One year before the date of use



■ Accommodation
 None



■ Restaurants/Cafés
 • Café & Restaurant: 112 seats



■ Parking
270 vehicles (free)



■ Remarks
 Wired/Wireless LAN accessible

■ Convention site

Site name	Floor	Area (m ²)	Width×Depth (m) (m)	Ceiling height (m)	Capacity (persons)					Remarks
					Fixed seats	School	Theater	Seated	Buffet	
Large hall (entire room)	1	1,155	35.0×30.0	5.0	—	600	1,000	—	—	
Large hall 1	1	660	20.0×30.0	5.0	—	330	500	—	—	
Large hall 2	1	495	15.0×30.0	5.0	—	250	350	—	—	
Small halls (entire room)	2	406	—	—	—	—	—	—	—	
Small hall 1	2	80	6.5× 8.9	3.5	—	—	—	—	—	
Small hall 2	2	145	8.2×15.3	2.7	—	80	100	—	—	
Small hall 3	2	181	14.7×15.3	2.7	—	80	100	—	—	
Workshop room (entire room)	4	198	8.6×20.7	2.7	—	126	—	—	—	
Workshop room 1	4	113	8.6×11.5	2.7	—	72	—	—	—	
Workshop room 2	4	84	8.6× 9.0	2.7	—	54	—	—	—	
Japanese-style room	4	72	5.3× 7.9	2.7	—	—	—	—	—	
Lounge	4	75	6.5× 8.7	2.7	—	28	—	—	—	
Small meeting room	4	33	6.4× 5.2	2.7	—	—	—	—	16	

Width × Depth and the floor area may differ depending on the shape of the room.