

40 Kanazawa Kokusai Hotel

Ru-8 Onuka-machi, Kanazawa 921-8565
 Tel: 076-296-0111 Fax: 076-298-1139
 URL <http://www.kanazawakokusaihotel.co.jp>



■ Number of seats
700 seats (Forest Fort)



■ Traffic access
 30-min bus ride from JR Kanazawa Station
 (Get off at Kanazawa Kokusai Hotel-mae)
 25 min by taxi from JR Kanazawa Station
 60-min bus ride from Komatsu Airport
 45-min drive from Komatsu Airport



■ Hours
 9:00am ~ 8:00pm

■ Date to start accepting reservation
 One year before the date of use



■ Accommodation
 • Twin room: 87
 • Double room: 6
 • Japanese/western bedding: 5
 • Japanese-style room: 1
 • Room for the handicapped: 1
 Total: 100 rooms 216 people



■ Restaurants/Cafés
 • Japanese restaurant "Kano": 75 seats
 • IL PUNTO: 45 seats
 • Buffet restaurant "Clover": 94 seats



■ Parking
250 vehicles (free)



■ Remarks
 Outdoor swimming pool (Jul. 20 ~ Aug. 31)
 Complimentary shuttle service (Max. 150)
 Complimentary shuttle service from Kanazawa Station

■ Convention site

Site name	Floor	Area (㎡)	Width×Depth (m) (m)	Ceiling height (m)	Capacity (persons)					Remarks
					Fixed seats	School	Theater	Seated	Buffet	
Forest Fort	2	562	18.7×30.0	4.6	—	340	700	320	550	The space can be partitioned into two rooms.
Hagoromo	2	75	7.5× 9.9	3.2	—	30	60	30	40	
Izutsu	2	75	7.5× 9.9	3.2	—	30	60	30	40	
Leaf Terrace	1	267	10.8×27.0	3.6	—	220	340	170	200	
Bara	1	85	7.2×12.0	3.2	—	50	80	40	50	
Himawari	1	50	5.1× 9.9	3.2	—	30	50	20	30	
Chitose	B1	220	14.1×15.6	3.5	—	110	200	100	130	

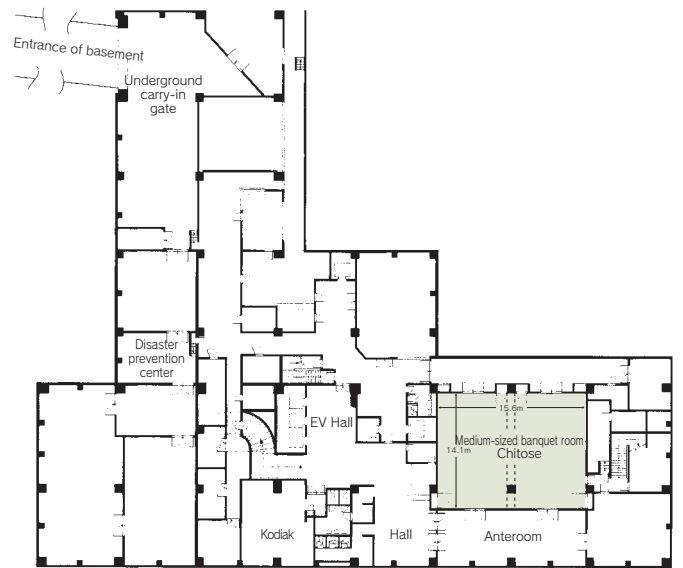
Width × Depth and the floor area may differ depending on the shape of the room.

Floor plan

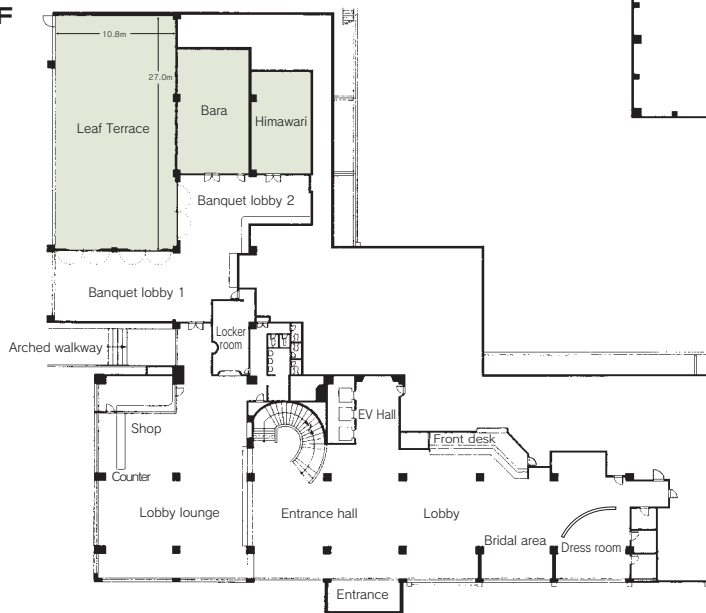


Leaf Terrace

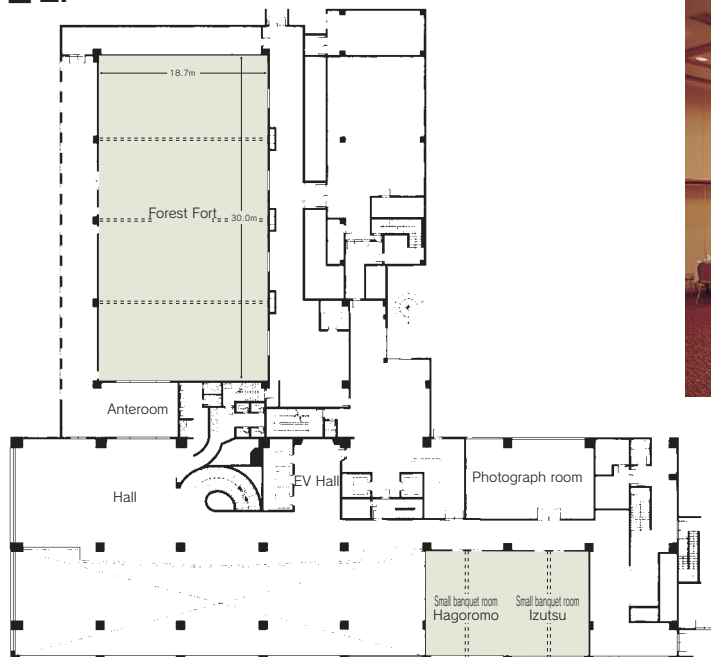
B1F



1F



2F



Forest Fort