

# 34 Hotel Kanazawa

1-1 Horikawa-shinmachi, Kanazawa 920-0849  
 Tel: 076-223-1111 Fax: 076-223-1110  
 URL <http://www.hotelkanazawa.co.jp/>



3F Keyaki



5F Wedding party room (Applause)



■Number of seats  
**1,360** seats (Diamond)



■Traffic access  
 1-min walk from JR Kanazawa Station, Kenrokuen Exit (East exit),  
 18-min drive from Kanazawa West IC  
 10-min drive from Kanazawa East IC  
 55-min bus ride from Komatsu Airport



■Hours  
 8:00am~10:00pm



■Accommodation  
 • Single room: 76  
 • Twin room: 65  
 • Double room: 8  
 • Other room: 10  
 • Total 159 rooms (242 people)



■Restaurants/Cafés  
 • Restaurant & Bar "Raspberry": 120 seats (Incl. private rooms)  
 • Restaurant "Pico": 50 seats  
 • "Kita-no-shoya": 50 seats  
 • Coffee shop: 24 seats



■Parking  
**100** vehicles (pay)



■Remarks  
 Diamond entire room and lobby (Foyer) can be integrated into one space (1,600m<sup>2</sup>)

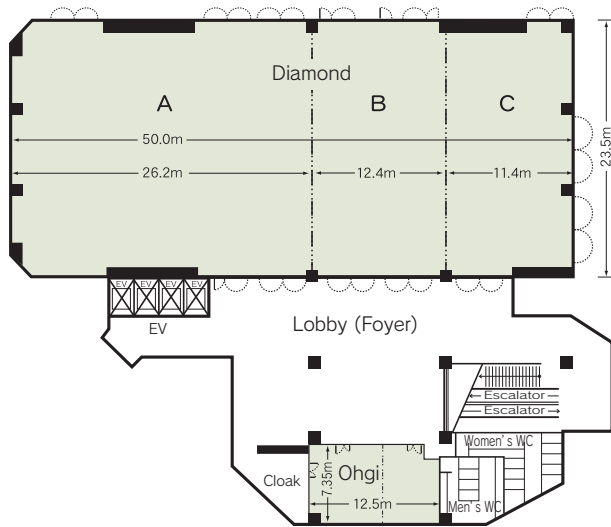
## ■Convention site

Site name	Floor	Area (m <sup>2</sup> )	Width×Depth (m) (m)	Ceiling height (m)	Capacity (persons)					Remarks
					Fixed seats	School	Theater	Seated	Buffet	
Diamond (entire room)	2	1,200	50.0×23.5	6.0	—	720	1,360	620	1,200	
Diamond (A)	2	630	26.2×23.5	6.0	—	336	512	250	400	
Diamond (B)	2	300	12.4×23.5	6.0	—	180	320	120	150	
Diamond (C)	2	250	11.4×21.7	6.0	—	120	252	90	120	
Ogi	2	91	12.5× 7.4	2.7	—	42	76	40	50	The space can be partitioned into two rooms.
Emerald entire room	4	580	35.2×16.6	4.0	—	342	600	280	400	The space can be partitioned into two rooms.
Fugetsu	4	122	18.6× 7.3	3.5	—	57	110	50	60	The space can be partitioned into two rooms.
Fuji	4	138	10.6×13.0	3.0	—	60	98	50	60	
Take	4	88	8.4×10.5	3.5	—	45	60	30	40	
Aoi	4	45	6.2× 7.3	3.5	—	21	40	20	25	
Nishiki	4	45	6.2× 7.3	3.5	—	21	40	20	25	
Wedding party room	5	303	15.6×19.2	3.2	—	—	—	120	150	
Meeting room (A)	6	22	3.6× 6.0	2.4	—	8	20	—	—	
Meeting room (B. C. D)	6	60	10.2× 6.0	2.4	—	30	50	—	—	The space can be partitioned into three rooms.

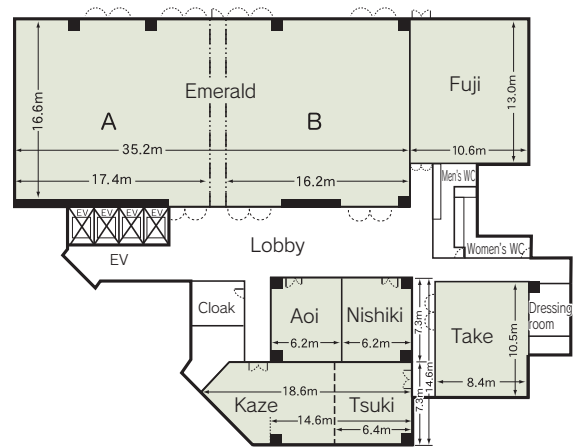
Width × Depth and the floor area may differ depending on the shape of the room.

# Floor plan

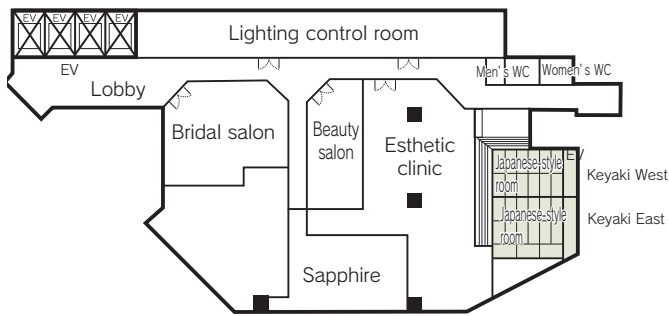
## 2F



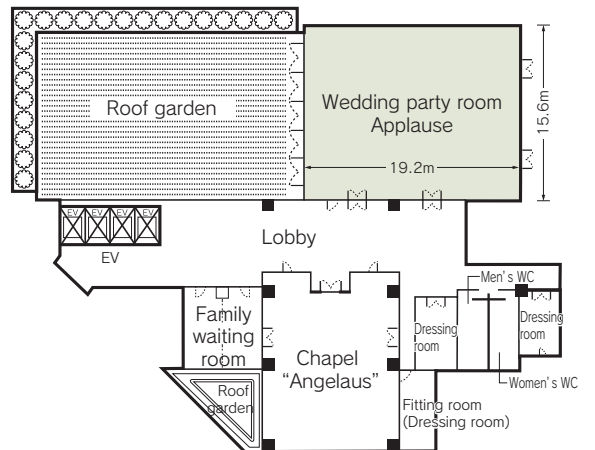
## 4F



## 3F



## 5F



2F Diamond



4F Emerald