

22 IT Business Plaza Musashi

14-31 Musashi-machi, Kanazawa 920-0855
 Tel : 076-224-6340 Fax : 076-224-8788
 URL <http://www.bp-musashi.jp/>



Terrace



Workshop room 3



Reception



■Number of seats
144 seats (Hall)



■Traffic access
 10 min from JR Kanazawa Station, Kenrokuen Exit
 (East exit)



■Hours
 10:00am~10:00pm
 Closed: Year-end and New Year's holidays
 (Dec. 29~Jan. 3)

■Date to start accepting reservation
 Six months before the date of use



■Accommodation
 None



■Restaurants/Cafés
 None



■Parking
 None



■Remarks
 Meitetsu M'za (Department store)
 Adjacent to ANA Holiday Inn Kanazawa Sky Hotel

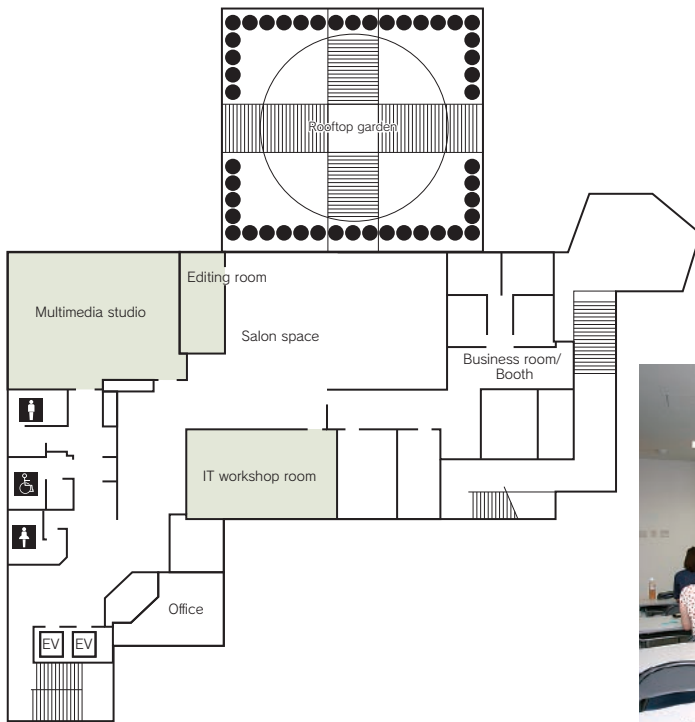
■Convention site

Site name	Floor	Area (㎡)	Width×Depth (m) (m)	Ceiling height	Capacity (persons)					Remarks
					Fixed seats	School	Theater	Seated	Buffet	
Hall	6	318	24.0×13.2	3.8	—	144	—	—	—	The space can be partitioned into two rooms.
Waiting room 1	6	13	4.7× 3.0	2.5	—	4	—	—	—	
Waiting room 2	6	16	4.2× 3.0	2.5	—	4	—	—	—	
Workshop room 1	5	105	13.4× 7.8	2.5	—	50	—	—	—	
Workshop room 2	5	66	7.8× 8.5	2.7	—	32	—	—	—	
Workshop room 3	5	61	6.8× 8.5	2.7	—	26	—	—	—	
Meeting room1	5	28	3.2× 8.5	2.7	—	12	—	—	—	
Meeting room2	5	28	3.2× 8.5	2.7	—	12	—	—	—	
IT workshop room	4	55	9.5× 5.7	2.6	—	22	—	—	—	
Multimedia studio	4	95	10.5× 8.2	3.1	—	—	—	—	—	
Editing room	4	14	6.1× 2.7	2.6	—	—	—	—	—	

Width × Depth and the floor area may differ depending on the shape of the room.

Floor plan

■ 4F

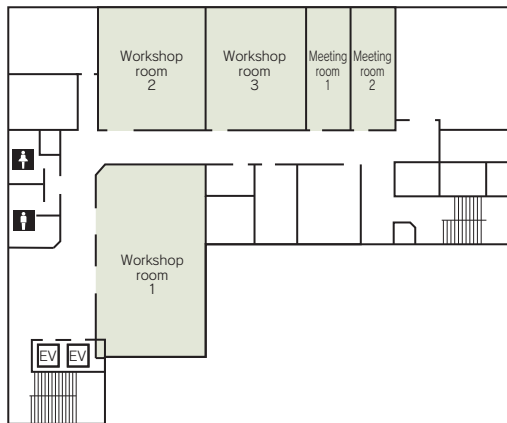


Multimedia studio



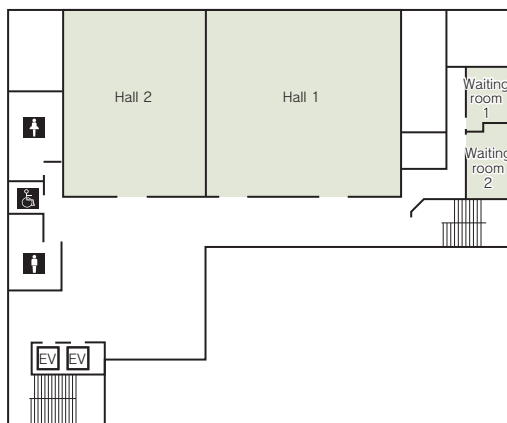
IT workshop room

■ 5F



Meeting room

■ 6F



Hall