

19 Kanazawa Hakuchoro Hotel Sanraku

6-3 Marunouchi, Kanazawa 920-0937
 Tel: 076-222-1212 Fax: 076-222-1120
 URL <http://www.nbs.hkr.co.jp/hakucyou/>



Lobby



Large bath



■ Number of seats
120 seats (Hosho)



■ Traffic access
 15-min bus ride from JR Kanazawa Station
 (Get off at Kenrokuen and walk for 5 min.)
 8 min by taxi from JR Kanazawa Station



■ Hours
 9:00am~9:00pm

■ Date to start accepting reservation
 At any time



■ Accommodation
 • Twin room: 76
 • Japanese-style room: 9
 Total 85 rooms (approx. 200 people)



■ Restaurants/Cafés
 • Japanese restaurant, Kaga cuisine "Mahoroba"
 Table: 44 seats, Japanese style: 12 seats
 • Tea Lounge "Partie": 24 seats



■ Parking
65 vehicles (1,000 yen/ night)
 Free for 3 hrs for banquet users



■ Remarks
 Natural hot spring large bath(Hotel guests only)

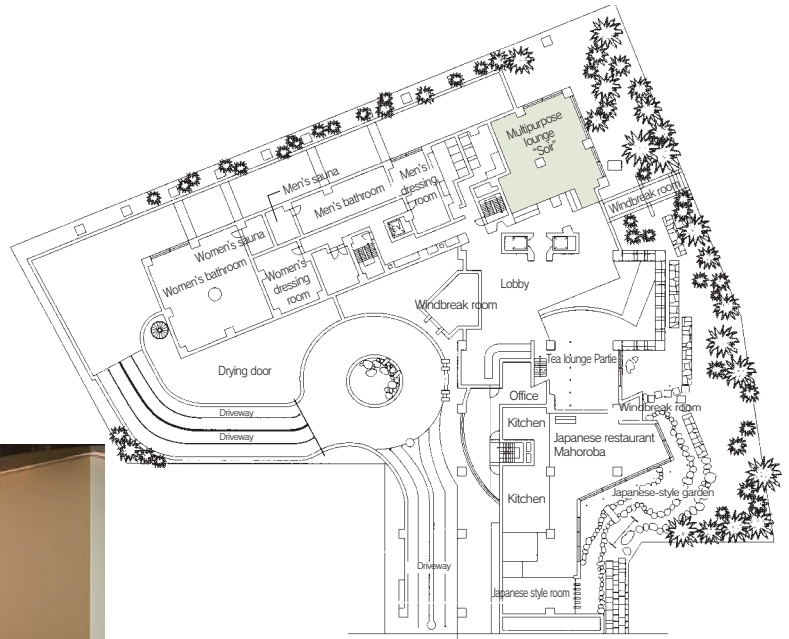
■ Convention site

Site name	Floor	Area (㎡)	Width×Depth (m) (m)	Ceiling height (m)	Capacity (persons)					Remarks
					Fixed seats	School	Theater	Seated	Buffet	
Hosho	2	185	9.4×19.6	2.7	—	100	120	100	120	
Swan	2	195	10.2×17.8	2.7	—	80	100	80	100	
Lounge "Soir"	1	55	—	2.6	—	24	40	20	30	

Width × Depth and the floor area may differ depending on the shape of the room.

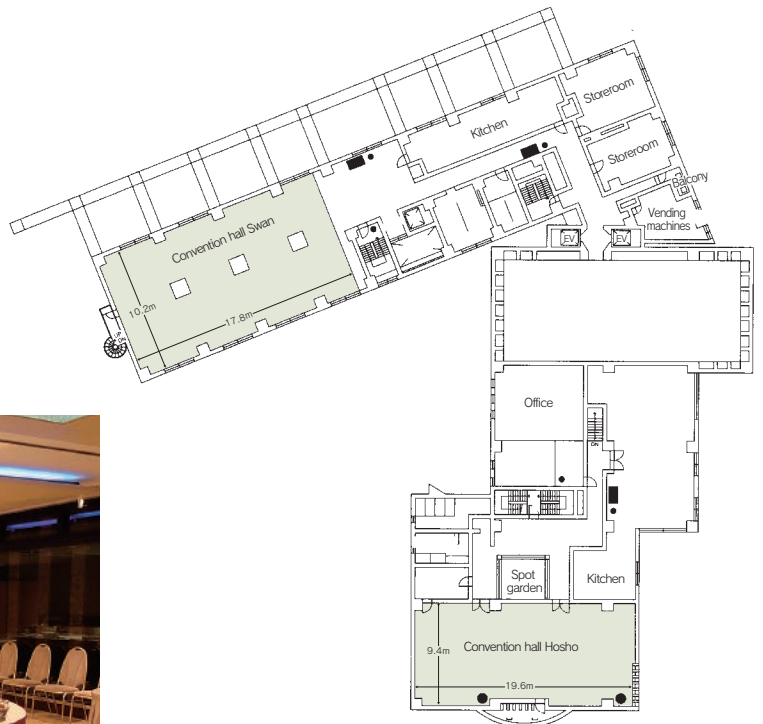
Floor plan

■ 1F



Soir

■ 2F



Hoshō