

15 Kanazawa Kenroku-so

(Accommodation for the Promotion and Mutual Aid Corporation for Private Schools of Japan)

6-40 Oyama-machi, Kanazawa 920-0918
 Tel: 076-232-1239 Fax: 076-232-1245
 URL <http://www.kenrokusou.com>
 E-mail info@kenrokusou.com



Meeting room



■ Number of seats
60 seats (Meeting room)



■ Traffic access
 10-min bus ride from JR Kanazawa Station
 (Get off at Minami-cho and walk for 4 min.)
 8 min by taxi from JR Kanazawa Station



■ Hours
 9:00am~9:00pm

■ Date to start accepting reservation
 Beginning of the month one year before the date of use



■ Accommodation
 • Single room: 28
 • Twin room: 18
 • Triple room: 12
 • Other room: 2
 Total 60 rooms (104 people)



■ Restaurants/Cafés
 • Japanese restaurant "Yukizuri": 50 seats



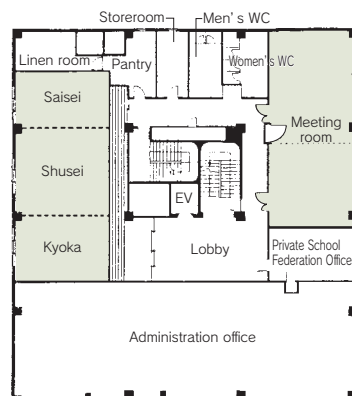
■ Parking
 16 vehicles (pay) , free for 2 hours



■ Remarks
 None

Floor plan

■ 2F



■ Convention site

Site name	Floor	Area (㎡)	Width×Depth (m) (m)	Ceiling height (m)	Capacity (persons)				Remarks	
					Fixed seats	School	Theater	Seated		Buffet
Meeting room	2	88	—	—	—	40	60	40	40	The space can be partitioned into two rooms.
Japanese-style room	2	49-tatami-mat room	—	—	—	70	—	50	—	The space can be partitioned into three rooms.

Width × Depth and the floor area may differ depending on the shape of the room.